

# EVOLUTION

# EVOLUTION

C O L L E C T I O N

A beautiful foundation for your interior design scheme



**ColorPoint**

Our innovative ColorPoint machine opens up a world of design opportunities with its ability to produce both patterned and textured designs. This breakthrough technology is patented by CMC making it the only tufting machine of its kind in the world utilising CMC's award winning Infinity pattern attachment.

EVOLUTION  
COLLECTION

## THE FOUNDATIONS OF EVOLUTION



danfloor, part of the Ulster Group are specialist manufacturers and suppliers of broadloom carpets and carpet tiles, producing ranges that are suitable for demanding environments including the healthcare, education, commercial and leisure industries.

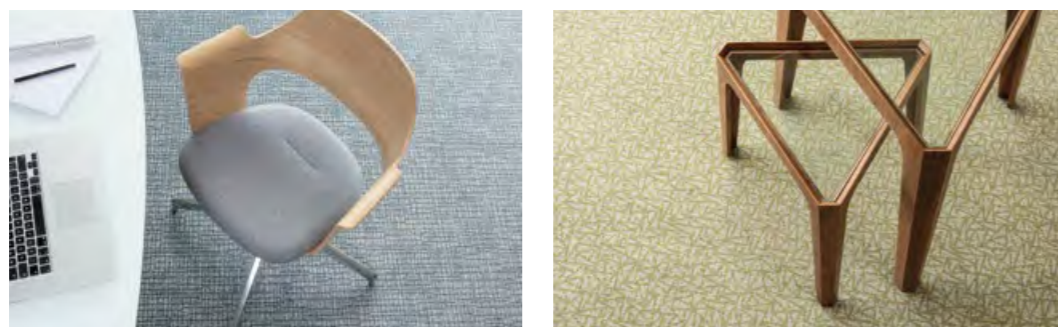
danfloor's manufacturing history is underpinned by research and development, partnered with continued investments in the latest tufting technologies, ensuring our customer's needs are at the forefront of our company philosophy.

Our Danish manufacturing plant has welcomed the addition of the ColorPoint machine by Card Monroe Corp, world renowned leaders in state of the art carpet tufting technology and by collaborating with Ulster Carpets the new designs have been taken to the next level with the introduction of the stunning Evolution Collection.

With our experienced Sales Team on hand to assist with technical advice on all aspects of application and installation the Evolution Collection is just a step away from your floor.

# DURABLE PERFORMANCE

Despite the detailed and elegant nature of its designs the Evolution Collection is built to be durable. The Collection possesses outstanding performance features, due to the carefully selected yarn material and its manufacturing processes.



## BUILT TO BE DURABLE

The Evolution Collection is certified to EN 1307, classification 33 "commercial use" enabling it to withstand high volumes of foot and wheeled traffic as well as intensive commercial cleaning without losing appearance.

## COLOUR FAST

Manufactured using solution dyed nylon the locked in colourfast system ensures superior colour and light fastness, even when subject to harsh cleaning chemicals

## SOIL AND STAIN RESISTANCE

The unique cross section of the yarn combined with state of art finishing technology means this Nylon 6 fibre reduces soil adhesion and prevents dirt from becoming embedded within the carpet fibres, making soil removal easier and less visible. Furthermore, the yarns special polymer characteristics, that last the entire lifespan of the carpet, repels acid stains, minimising chemical adhesion and maintains the appearance of your investment.

## SPILL SAFE

The Evolution Collection is available in our Ti Bac which has an integral protective impervious membrane that prevents liquid spills penetrating through to the sub-floor, reducing contamination, fungal growth and unpleasant odours.

# CARPET WITH A CONSCIENCE

## ECONYL® Regenerated System

An intelligent and sustainable way  
to create products from waste  
in a continuous loop.



Made with the ECONYL® regenerated Nylon yarn, The Evolution Collection has a strong environmental focus. Manufactured from pre and post-consumer waste, including items like abandoned fishing nets and other waste material, ECONYL® nylon is 100% regenerated and infinitely regenerable.

The ECONYL® 100% regenerated Nylon yarn produced through this process has exactly the same high quality and technical performance as those yarns made from virgin raw materials, the big difference is that it is much more sustainable.



ECONYL® regenerated nylon  
has less impact on climate  
change. It reduces the  
global impact of nylon by  
up to 80% compared with  
material produced from oil.

ECONYL® (EPD 2018)

EVOLUTION  
COLLECTION

[www.danfloor.co.uk](http://www.danfloor.co.uk)

# SPILL SAFE IMPERVIOUS PROTECTION

## TI BAC

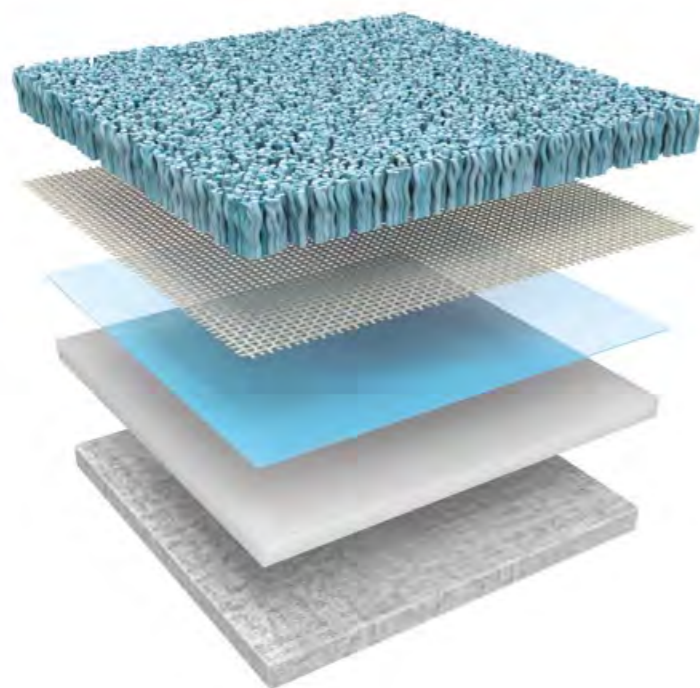
The backing of our carpets is an essential element of our products performance characteristics.

Manufactured to conform to the latest standards in impermeability, danfloor's "Ti" backing protects against sub floor contamination. Situated beneath the carpet substrate and above the textile backing, the impervious membrane has been designed to stop surface liquid penetration and prevent sub-floor contamination.

The "Ti" backing used on the Evolution Collection is ideal for environments where the cleanability of the carpet is an important factor. With conventional carpets, if liquids are spilt they will typically seep through to the floor below which can cause bacterial and fungal growth which potentially leads to odours and corrosion of the carpet backing or flooring. Danfloor's "Ti" backing prevents any liquids passing through the carpet, making spillages quick and easy to remove.

The backing is also compatible with under floor heating.

- Carpet Yarn
- Primary backing
- Impervious membrane
- Ti BAC
- Sub-floor



Spill Safe

Suitable for wet cleaning

Ease of maintenance

Sub-floor protection

Helps prevent bacterial and fungal growth

Ideal for use in areas where spillages may occur



Stops surface liquid penetration and protects the sub-floor



## COLOUR AND DESIGN

EVOLUTION  
COLLECTION

The Evolution Collection has access to a palette of on trend yarn colours. By considering the design of each range the available colour bank has been created based upon how the colour combinations work to enhance the design, therefore you will notice that some designs will be available in a number of colour ways, whilst some have a more refined selection.

Evolution comprises of eight ranges; Watercolour, Chevron, Forest, Origin, Geo Form, Glaze, Manhattan and Scape and offers a variety of designs from subtle to bold statement pieces. The Collection provides a contemporary colour palette that aids with delivering form and function to a variety of environments. The Collection will compliment any stylish interior and provides a strong foundation for any scheme.

Watercolour

GEFORM

CHEVRON

GLAZE

FOREST

MANHATTAN

ORIGIN

SCAPE



# Watercolour

SUBTLE NATURAL PATTERNS  
CREATE A TRANQUIL DESIGN



# Watercolour

SUBTLE NATURAL PATTERNS  
CREATE A TRANQUIL DESIGN

Cascade your floor with this beautiful Watercolour design. This natural and subtle pattern incorporates complementary colours to create this tranquil design.

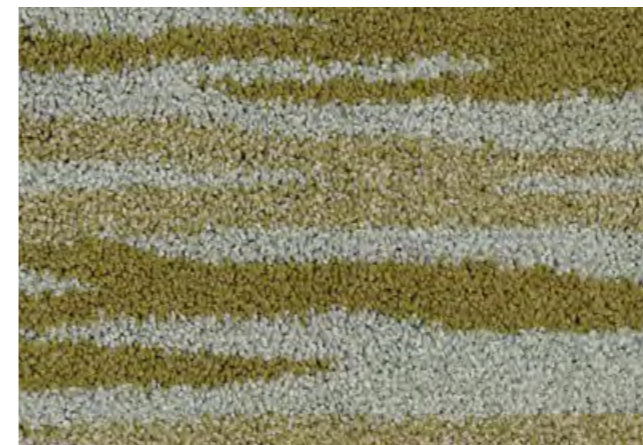
A serene and calm atmosphere will be created with the installation of the Watercolour range. Coordinate with plains or other organic textures and designs to complete your scheme.



3666 875



3666 874



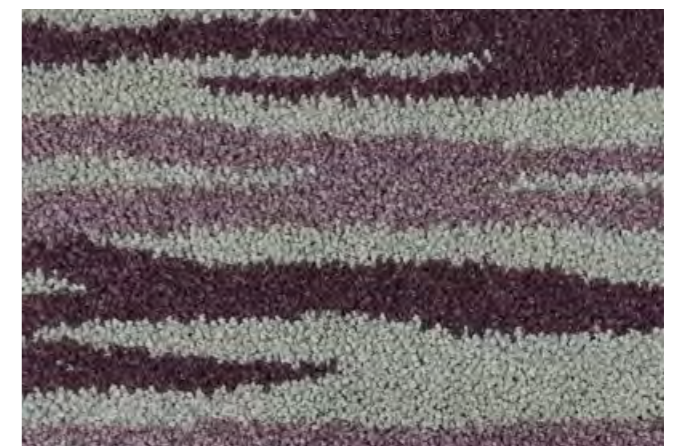
3666 866



3666 886



3666 863



3666 896



# CHEVRON

MODERN AND INSPIRING DESIGN  
WILL TRANSFORM YOUR INTERIOR

EVOLUTION  
COLLECTION

[www.danfloor.co.uk](http://www.danfloor.co.uk)

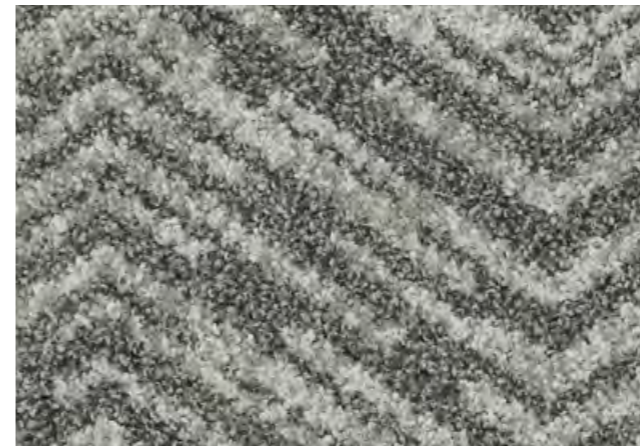


# CHEVRON

MODERN AND INSPIRING DESIGN  
WILL TRANSFORM YOUR INTERIOR

This inverted v shape pattern derives from shapes found in early art and rock carvings, but with this modern design it will pull rank within your interior scheme. The modern and inspiring design, available in a variety of on trend colours, will completely transform your room.

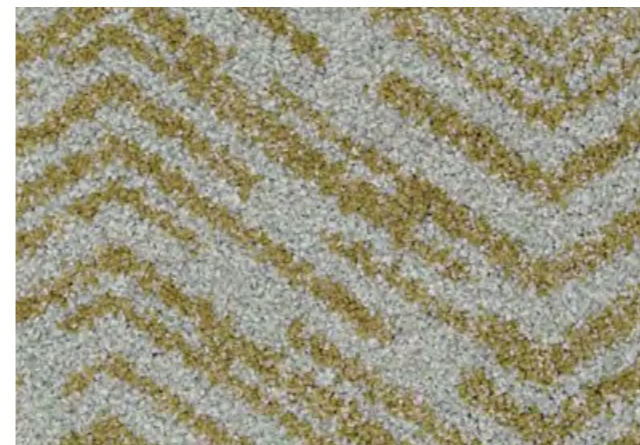
Consider using the complimentary solid colours of Economix to boarder the Chevron range and produce a sophisticated flooring finish.



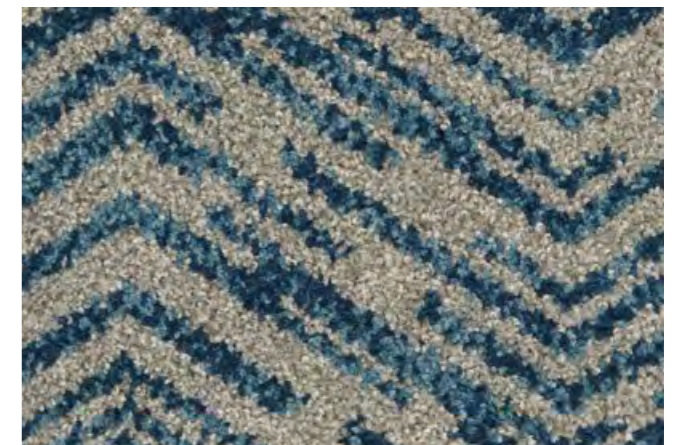
3666 775



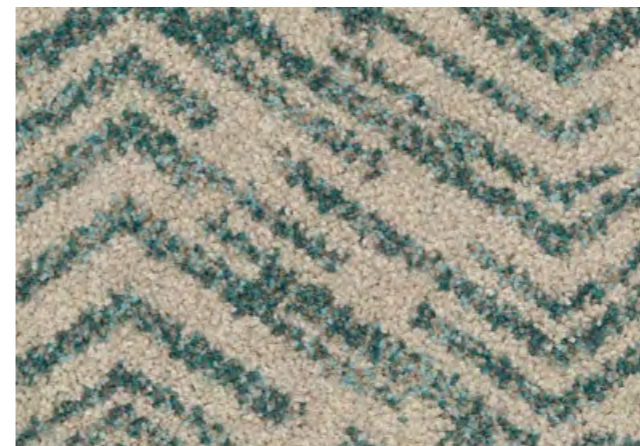
3666 784



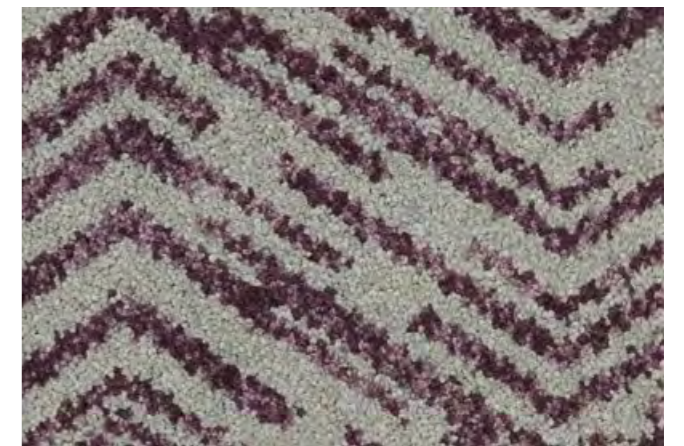
3666 766



3666 786



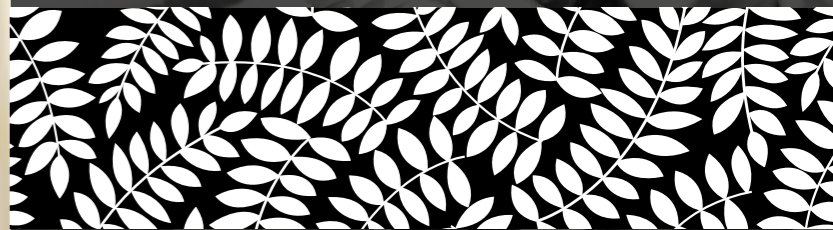
3666 763



3666 796



# FOREST



A SENSE OF NATURE



# FOREST

A SENSE OF NATURE

Make a statement with Evolution's Forest Range. The large-scale fern design inspired by shapes and patterns found in the countryside will bring a beautiful, fresh and unique finish to your interior design scheme.

This organic design will provide a statement piece for your floor and allow your design scheme to take on an essence of nature. Available in natural mute tones this range is ideal for creating an environment with a breath of fresh air.



3666 173



3666 122



3666 198



3666 176



3666 144



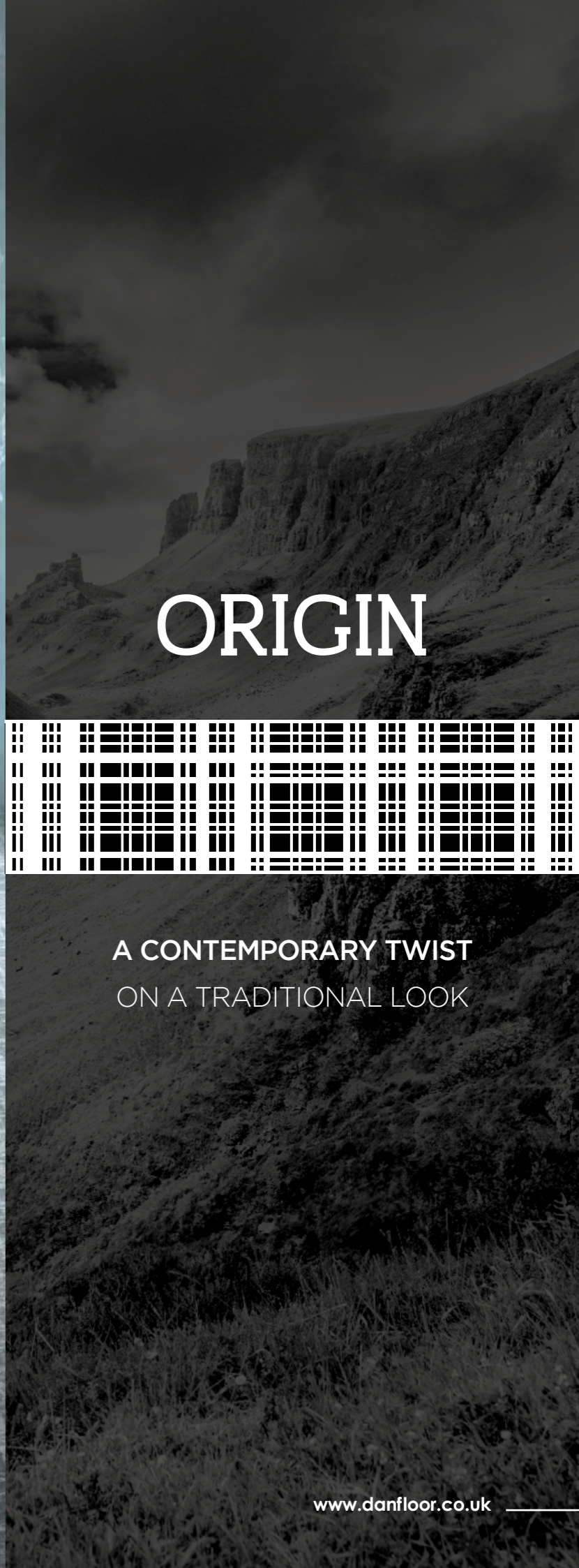
3666 150



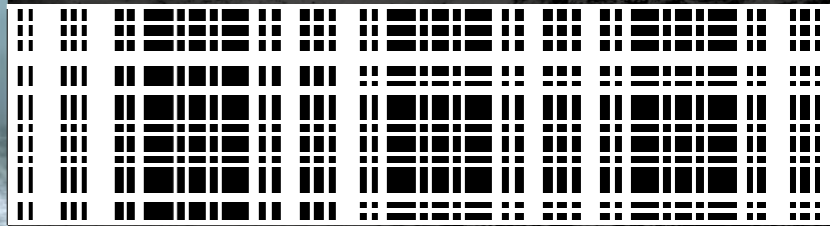
3666 161



3666 165



# ORIGIN



A CONTEMPORARY TWIST  
ON A TRADITIONAL LOOK

# ORIGIN

A CONTEMPORARY TWIST ON A TRADITIONAL LOOK

The tradition and character of the plaid design brings warmth and charm to a room and with Origin a contemporary look and feel can also be achieved.

The varied colour bank, ranging from blues and red to more neutral and modern tones, allows you to create a homely and traditional interior or a fresh and modern scheme. Whatever colour you choose you can be confident in the fact that this bold pattern and distinctive look will never go out of fashion.



3666 573



3666 561



3666 550



3666 598



3666 576



3666 565



3666 522



3666 590



3666 578



3666 585



3666 544



3666 595



3666 587



3666 584



3666 588



3666 589



EVOLUTION  
COLLECTION

GEO FORM

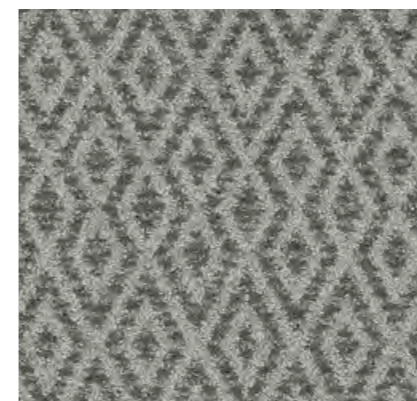
INJECT VITALITY  
INTO YOUR SPACE

[www.danfloor.co.uk](http://www.danfloor.co.uk)

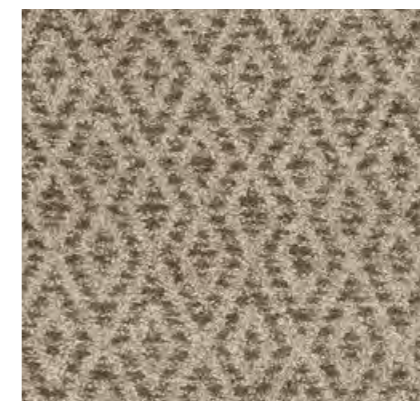
Geo Form will provide a statement piece for your interior design scheme and instantly inject vitality into your space. Inspired by architectural shape and form this geometric range is a fabulous way to bring pattern into your room.

The geometric pattern is flexible, functional and visually very effective. The textiles, wall coverings and furniture you combine with this design can bring either vibrancy and life or a soft elegant style to your interior.

The available colour bank provides a dynamic and stunning range which is sharp and beautiful. The simple and clean lines are supported by a subtle texture to soften the design and provide a delicate geometric design which will attract all the right kinds of attention.



3666 273



3666 222



3666 298



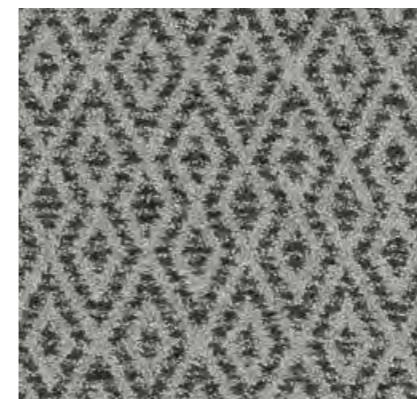
3666 244



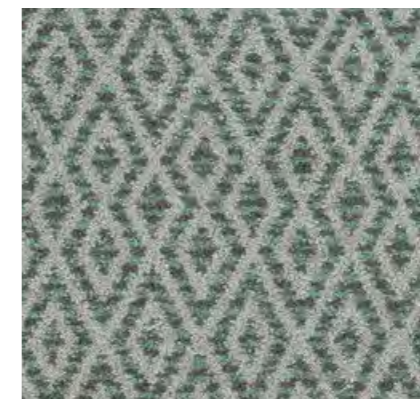
3666 290



3666 278



3666 276



3666 261



3666 287



# GLAZE

MODERN ANGULAR PATTERN  
INSPIRED BY LANDSCAPES



# GLAZE

MODERN ANGULAR PATTERN  
INSPIRED BY LANDSCAPES

Inspired by the natural landscape and geometric angular shapes Glaze allows you to utilise pattern in a stylish and minimalistic way.

The tessellation of the sharp angled lines creates a strong presence with a design that depicts structure and order. The use of triangular shapes creates a sense of progression, purpose and direction in a gentle pattern that will enhance any interior design scheme.



3666 373



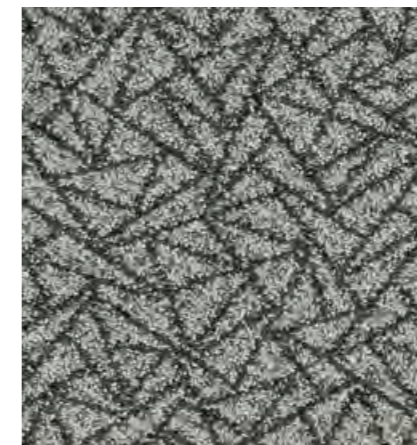
3666 322



3666 350



3666 344



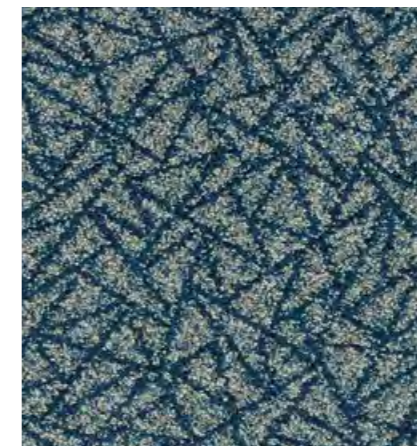
3666 376



3666 378



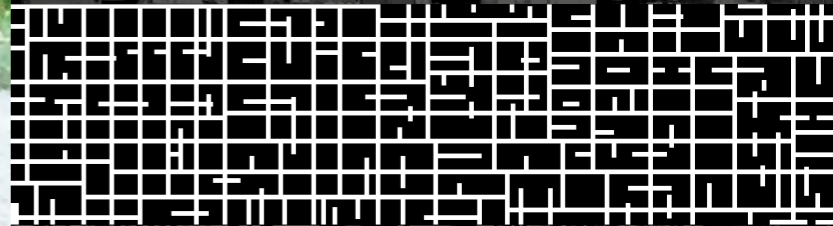
3666 361



3666 387



# MANHATTAN



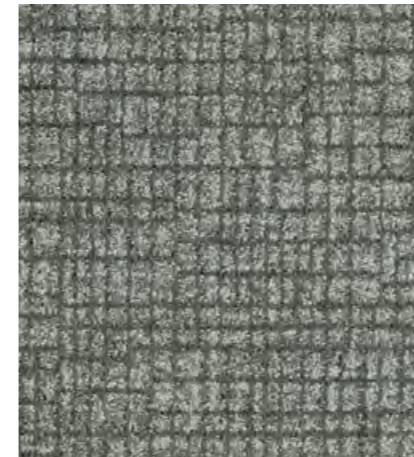
LARGE SCALE PATTERN  
INSPIRED BY NEW YORK

# MANHATTAN

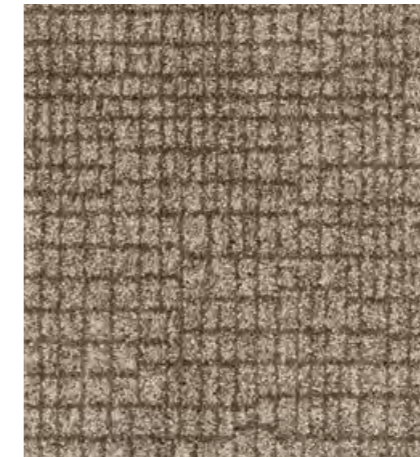
LARGE SCALE PATTERN  
INSPIRED BY NEW YORK

Inspired by the aerial landscape of Manhattan this new range brings a large scale structural pattern into a contemporary and sophisticated design which will create modern and fresh settings from the floor up.

This range, which was developed as a large-scale version of Equinox Evolve, is as timeless as the Manhattan landscape itself and provides a solid foundation for any modern interior design scheme.



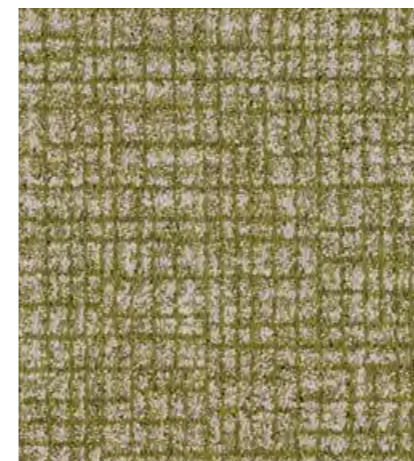
3666 473



3666 422



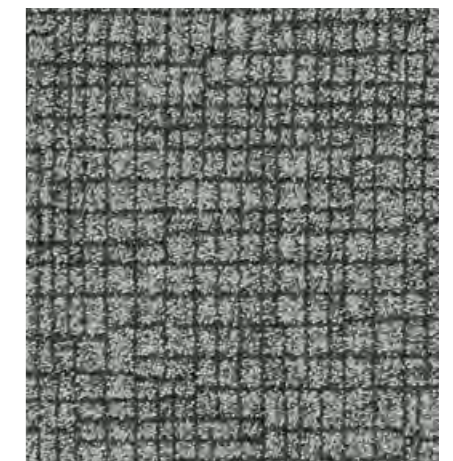
3666 478



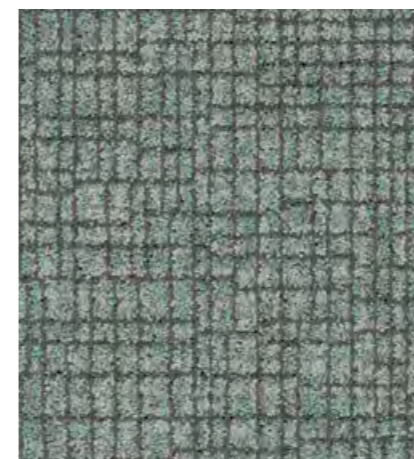
3666 444



3666 498



3666 476



3666 461



# SLAPE

A SUBTLE LINEAR EFFECT  
ADDS TEXTURE AND DEPTH



# SCAPE

A SUBTLE LINEAR EFFECT  
ADDS TEXTURE AND DEPTH

The subtle linear effect of Scape will add texture and depth to your carpet. It's subtle design adds consistency to the natural pattern and creates a simple yet elegant range.

Scape has been incorporated as a base layer for a number of the ranges from the Evolution Collection so that it can be laid alongside the other designs to enhance an interior scheme and continue the Collection from one room to another.



3666 673



3666 622



3666 650



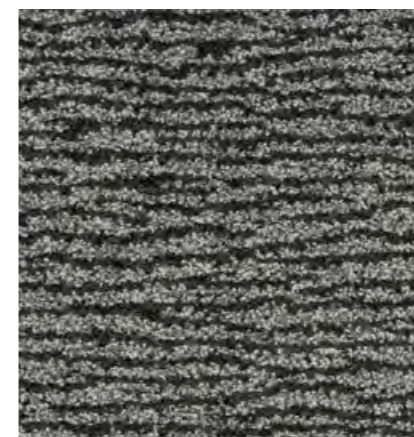
3666 644



3666 661



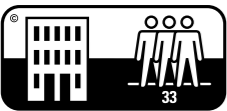
3666 676



3666 678

TECHNICAL SPECIFICATION	EVOLUTION COLLECTION	STANDARD																											
Design Pattern Identification	3666																												
Method of manufacture	Tufted "Colorpoint LCL"																												
Gauge	1/8" Gauge																												
Measures	Rolls approx 4.00 Mts wide																												
Surface	Cut Pile Patterned																												
Colouration	Solution Dyed																												
Yarn Fibre	100% ECONYL® Regenerated Nylon 6 yarn																												
Pattern Repeat	<table><tr><td></td><td>Width</td><td>Length</td></tr><tr><td>Watercolour</td><td>99cm</td><td>84cm</td></tr><tr><td>Chevron</td><td>80cm</td><td>76cm</td></tr><tr><td>Forest</td><td>200cm</td><td>100cm</td></tr><tr><td>Origin</td><td>40cm</td><td>45cm</td></tr><tr><td>Geo Form</td><td>80cm</td><td>38cm</td></tr><tr><td>Glaze</td><td>80cm</td><td>38cm</td></tr><tr><td>Manhattan</td><td>80cm</td><td>67.5cm</td></tr><tr><td>Scape</td><td>80cm</td><td>38cm</td></tr></table>		Width	Length	Watercolour	99cm	84cm	Chevron	80cm	76cm	Forest	200cm	100cm	Origin	40cm	45cm	Geo Form	80cm	38cm	Glaze	80cm	38cm	Manhattan	80cm	67.5cm	Scape	80cm	38cm	
	Width	Length																											
Watercolour	99cm	84cm																											
Chevron	80cm	76cm																											
Forest	200cm	100cm																											
Origin	40cm	45cm																											
Geo Form	80cm	38cm																											
Glaze	80cm	38cm																											
Manhattan	80cm	67.5cm																											
Scape	80cm	38cm																											
Total Weight / m²	3250 Grams / m²	ISO 8543																											
Inserted Pile Weight / m²	1250 Grams / m²	ISO 8543																											
Total Thickness	7.50 mm	ISO 1765																											
Pile Height above substrate	5.00 mm																												
Tuft Density	approx 154,000 / m²																												
Primary Backing	Woven Polyester																												
Backing	Ti BAC (Textile Impervious)																												
Treatment	BI-OME® Antimicrobial																												
PERFORMANCE TESTS																													
Flammability / Burning Classification	Cfl S1	EN13501 -1																											
Electrostatic Properties	Permanent Antistatic <2 KW																												
Thermal Resistance (TOG)	1.5	BS4745:2005																											
Classification EN1307	33 Commercial Use	ISO 10361																											
Castor Chair Suitability	Class A (Continuous use)	EN985, Test A																											
Reduction of Transmitted Impact Noise	28 dB	BS EN ISO 140-8																											
Colour Fastness to Light	>6	EN ISO 105 BO2																											
Luxury rating	LC4	EN1307																											
Stain Release (Scale 1-8) 8 is Best	6	3M test procedure																											
Soiling Test (Scale 1-5) 5 is Best	3	ISO 11378 - 1:2000																											
VOC Emissions Test	Indoor Air Comfort GOLD	Eurofins																											

Please be aware that patterned carpets, especially those that incorporate a liner design, could potentially show a bow effect if fitted in a certain way. For more information please refer to our technical advice.



Connect with our social media channels and keep up to date with all the latest information and developments regarding the Evolution Collection. For further information about our ranges visit [www.danfloor.co.uk](http://www.danfloor.co.uk) or call our sales office on 0333 014 3132 where they will be more than happy to help with any enquiries.

To order sample material please visit our sample request page [www.danfloor.co.uk/samples](http://www.danfloor.co.uk/samples) or email [sales@danfloor.co.uk](mailto:sales@danfloor.co.uk).

We look forward to hearing from you soon.

# danfloor

An Ulster Group Company

**danfloor Uk Ltd**

106 Longmead Road, Emerald Park,  
Emersons Green, Bristol BS16 7FG,  
United Kingdom  
T: 0333 014 3132, F: 0333 014 3134  
E: [info@danfloor.co.uk](mailto:info@danfloor.co.uk)



**Danfloor Denmark**

danfloor a/s, Østerbro 9,  
DK-6933 Kibæk, Denmark  
T: +45 9699 1900, F: +45 9699 1999  
E: [sales@danfloor.com](mailto:sales@danfloor.com)  
[www.danfloor.com](http://www.danfloor.com)

[www.danfloor.co.uk](http://www.danfloor.co.uk)