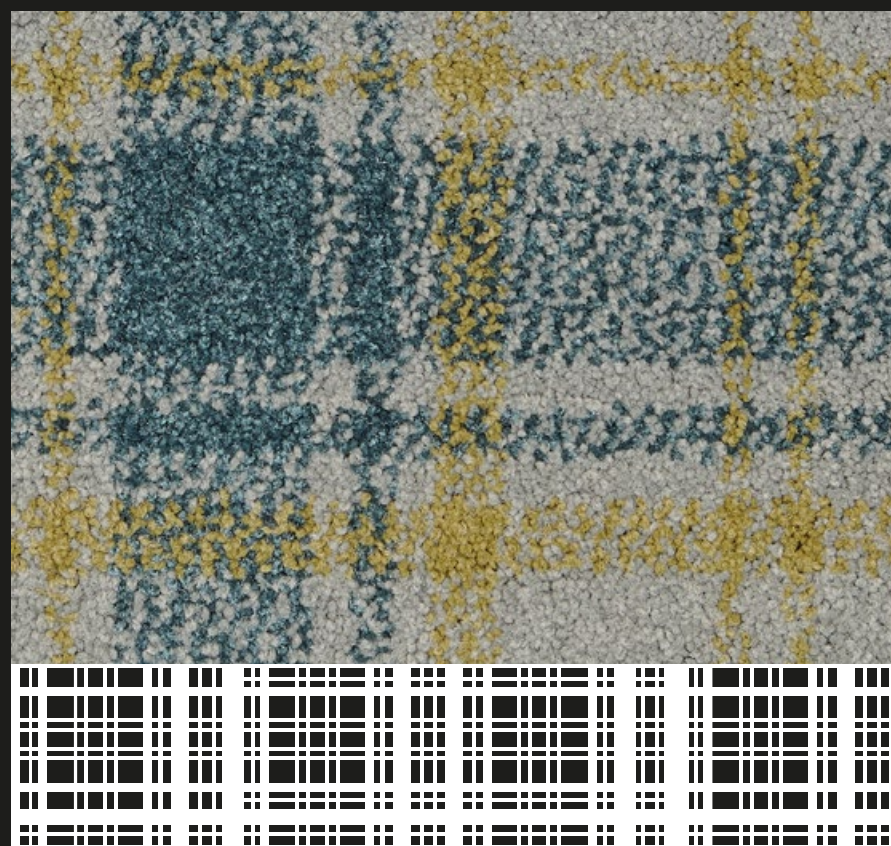
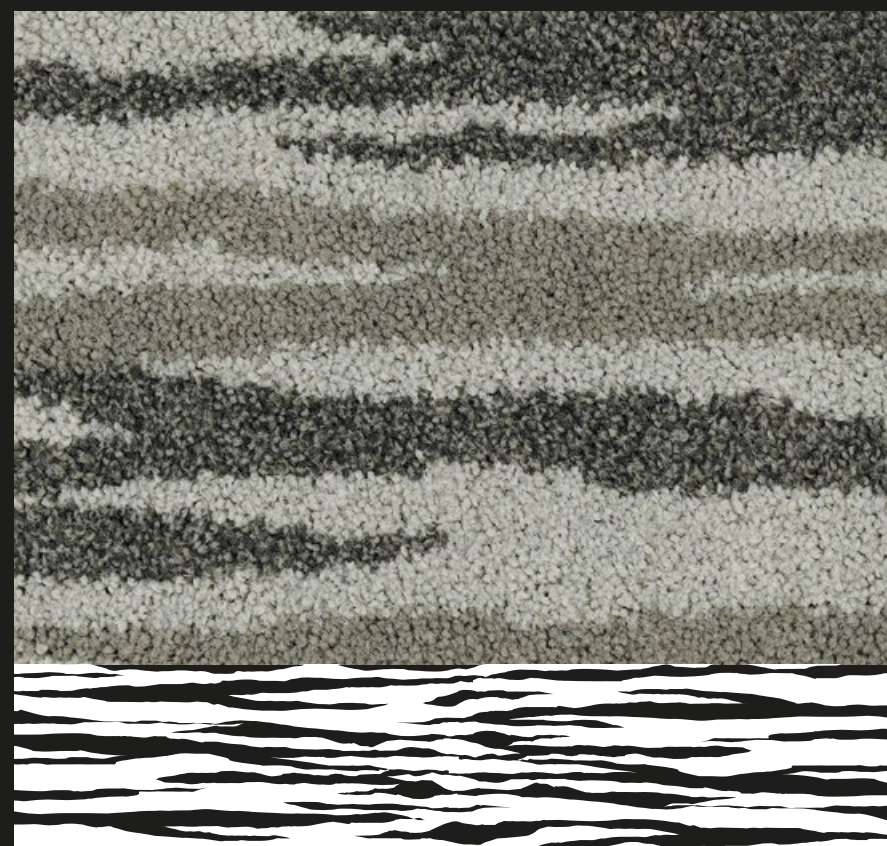


EVOLUTION

SPRING COLLECTION



ORIGIN



Watercolour

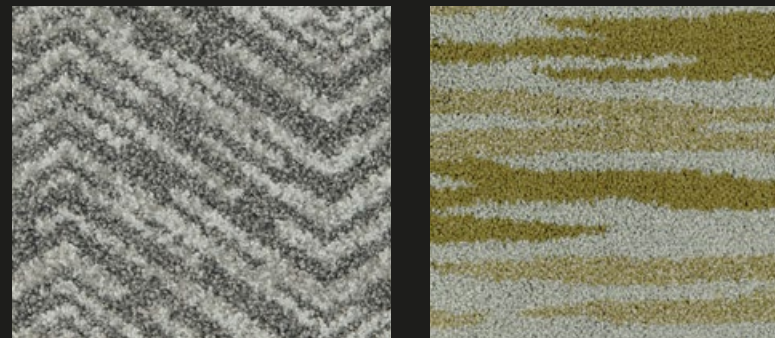


CHEVRON

EVOLUTION

SPRING COLLECTION

The EVOLUTION Collection is a stunning range providing a beautiful foundation for your interior design scheme. Manufactured using Aquafil's ECONYL® Nylon yarn, which is 100% regenerated and infinitely regenerable, EVOLUTION offers an environmentally conscious option with a strong design focus. The Collection offers a variety of options from subtle delicate designs to bold statement pieces and with an on-trend palette of colours it allows you to create an elegant space full of character.



ORIGIN

The tradition and character of the plaid design brings warmth and character to a room. Origin provides a contemporary twist on a custom plaid.

Watercolour

This natural and subtle pattern incorporates complimentary colours to create a serene and calm atmosphere, helping to bring tranquillity to any design scheme.

CHEVRON

This inverted v shape pattern derives from shapes found in early art and rock carvings, but with this modern design it will pull rank within your interior design scheme.



The finest carpet yarn

The ECONYL® yarn used to create the EVOLUTION Collection is an important factor contributing to the integrity and resilience of the carpet and goes a long way in determining the overall performance of the product.

The ECONYL® fibres used to make the EVOLUTION Collection result in a carpet designed to perform in the most demanding environments and is able to withstand high levels of traffic and heavy contact along with intensive commercial cleaning. The range falls into the highest of 3 commercial categories, class 33-heavy usage, which determines a carpets resistance to wear and change in appearance over time, resulting in a hardwearing, durable flooring solution.

Key features of ECONYL® fibre include:

- Stain and soil resistance
- Enhanced texture and colour
- 100% regenerated and recyclable
- Solution dyed yarn
- Resilience to wear
- Colour fastness

BREEAM®

Setting the standards for sustainable design

The EVOLUTION Collection has been certified with an A to A+ BRE rating, depending upon application. The BRE Environmental Assessment Method is the leading and most widely used environmental assessment method for buildings. It sets the standard for best practice in sustainable design and has become the de facto measure used to describe a building's environmental performance.

Certification gives you confidence that products and services will perform as expected. It ensures that they meet - and continue to meet - appropriate standards, through a combination of regular company audits and a schedule of ongoing tests.

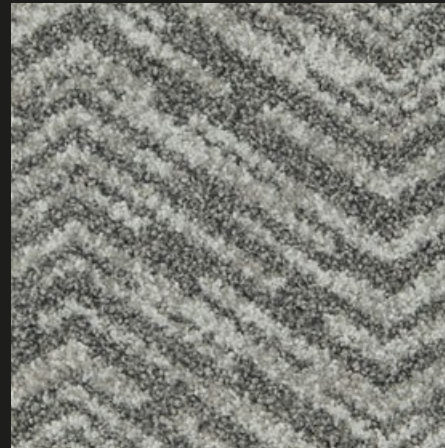
CHEVRON

WITHSTAND THE TEST OF TIME WITH THIS MODERN AND DISTINGUISHING V-SHAPE EFFECT



Chevron

3666 784



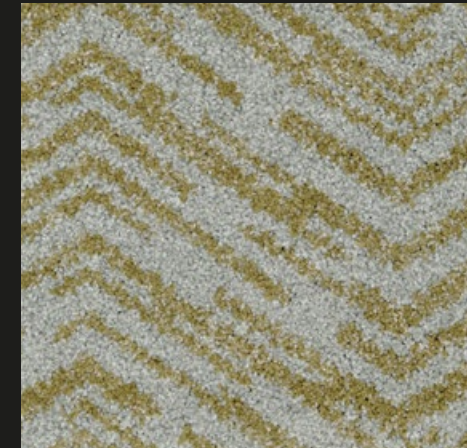
Chevron

3666 775



Chevron

3666 796



Chevron

3666 766



Chevron

3666 786



Chevron

3666 763



Origin

3666 584



Watercolour

3666 886

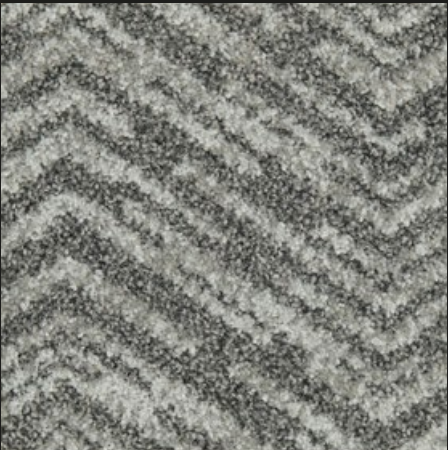
Watercolour

CREATE A PICTURESQUE INTERIOR WITH THIS TRANQUIL WATERCOLOUR DESIGN



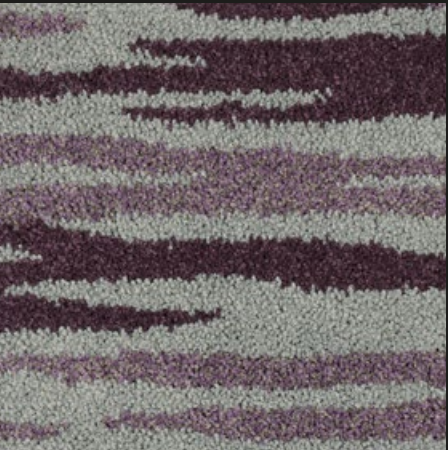
Watercolour*

3666 875



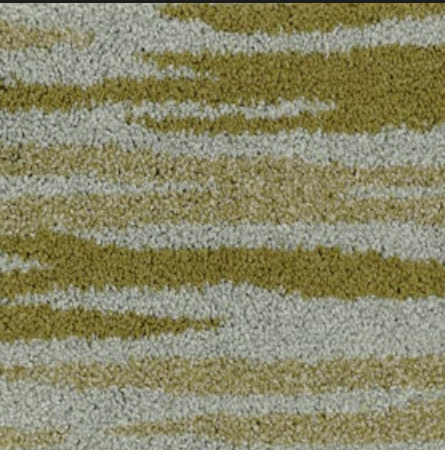
Chevron

3666 775



Watercolour

3666 896



Watercolour

3666 866



Watercolour

3666 886



Watercolour

3666 863



Watercolour

3666 874



Origin

3666 585



Chevron

3666 786

* Image not to scale

ORIGIN

A CONTEMPORARY TWIST ON A TRADITIONAL LOOK



Origin

3666 588



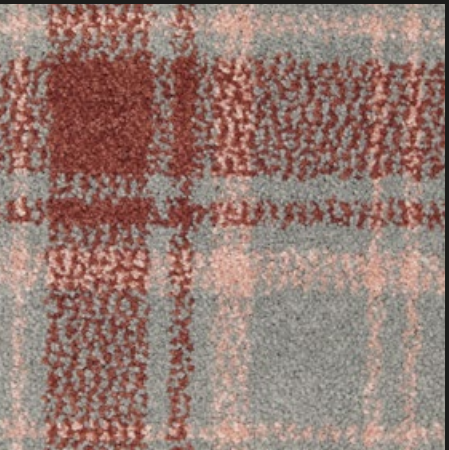
Origin

3666 585



Origin

3666 589



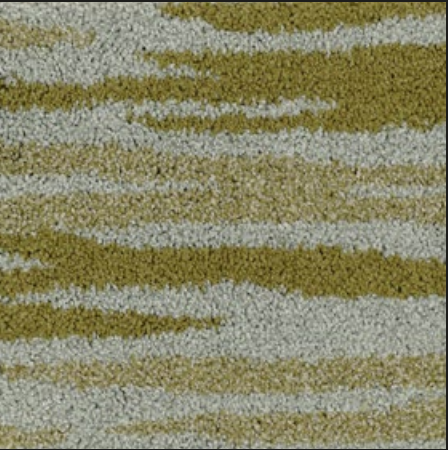
Origin

3666 595



Origin

3666 584



Watercolour

3666 866



Chevron

3666 784

EVOLUTION

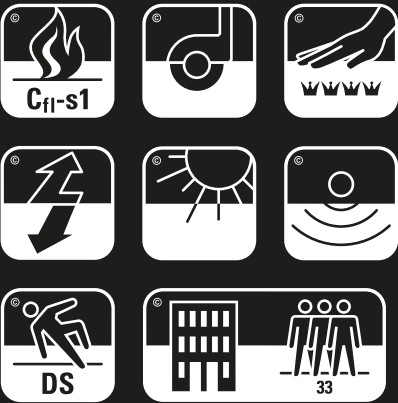
SPRING COLLECTION

TECHNICAL SPECIFICATION	EVOLUTION COLLECTION	STANDARD												
Design Pattern Identification	3666													
Method of Manufacture	Tufted "Colorpoint LCL"													
Gauge	1/8" Gauge													
Measures	Rolls approx 4.00 Mts width													
Surface	Cut Pile Patterned													
Colouration	Solution Dyed													
Yarn Fibre	100% ECONYL® Regenerated Nylon 6 yarn													
Pattern Repeat	<table><tr><td></td><td>Width</td><td>Length</td></tr><tr><td>Origin</td><td>40cm</td><td>45cm</td></tr><tr><td>Watercolour</td><td>99cm</td><td>84cm</td></tr><tr><td>Chevron</td><td>80cm</td><td>76cm</td></tr></table>		Width	Length	Origin	40cm	45cm	Watercolour	99cm	84cm	Chevron	80cm	76cm	
	Width	Length												
Origin	40cm	45cm												
Watercolour	99cm	84cm												
Chevron	80cm	76cm												
Total Weight M²	3250 Grams / M²	ISO 8543												
Inserted Pile Weight M²	1250 Grams / M²	ISO 8543												
Total Thickness	7.50 mm	ISO 1765												
Pile Height Above Substrate	5.00 mm													
Tufy Density	approx 154,000 / M²													
Primary Backing	Woven Polyester													
Backing	Ti BAC (Textile Impervious)													
PERFORMANCE TEST														
Flammability / Burning Classification	Cfl S1	EN13501 -1												
Electrostatic Properties	Permanent Antistatic <2 KW													
Thermal Resistance (TOG)	1.5	BS4745:2005												
Classification EN1307	33 Commercial Use	ISO 10361												
Castor Chair Suitability	Class A (Continuous use)	EN985, Test A												
Reduction of Transmitted Impact Noise	28 dB	BS EN ISO 140-8												
Colour Fastness to Light	>6	EN ISO 105 BO2												
Luxury rating	LC4	EN1307												
Stain Release (Scale 1-8) 8 is Best	6	3M test procedure												
Soiling Test (Scale 1-5) 5 is Best	3	ISO 11378 - 1:2000												
VOC Emissions Test	Indoor Air Comfort GOLD	Eurofins												

We look forward to hearing from you soon

For further information about the new additions to the Evolution Collection or to request samples visit www.danfloor.co.uk. Alternatively you can contact our knowledgeable sales team on 0333 014 3132 or sales@danfloor.co.uk.

Sign up online to receive our newsletter and keep up to date with all the latest danfloor news and product information.



danfloor
An Ulster Group Company

danfloor Uk Ltd
106 Longmead Road,
Emerald Park, Emersons Green
Bristol BS16 7FG, United Kingdom

T: 0333 014 3132,
F: 0333 014 3134
E: info@danfloor.co.uk

www.danfloor.co.uk