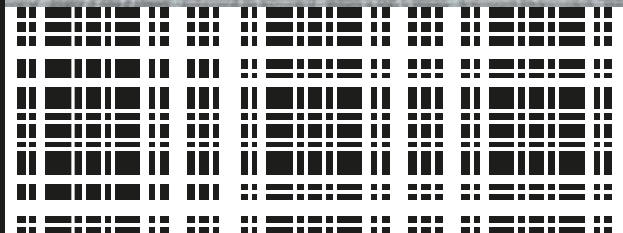


EVOLUTION

C O L L E C T I O N 02



ORIGIN



FOREST

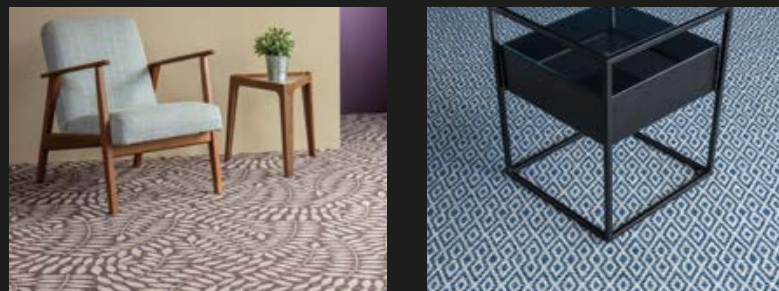


GEO FORM

EVOLUTION

C O L L E C T I O N 02

The EVOLUTION Collection is a stunning new range providing a beautiful foundation for your interior design scheme. Manufactured using Aquafil's ECONYL® Nylon yarn, which is 100% regenerated and infinitely regenerable, EVOLUTION offers an environmentally conscious option with a strong design focus. The Collection offers a variety of options from subtle delicate designs to bold statement pieces and with an on-trend palette of colours it allows you to create an elegant space full of character.



ORIGIN

The tradition and character of the plaid design brings warmth and character to a room. Origin provides a contemporary twist on a custom plaid.

FOREST

Make a statement with the new Forest range. The large scale fern design will bring a sense of nature to your interior design scheme with the flow of its organic pattern.

GEO FORM

Geo Form will provide a statement feature for your interior design scheme and instantly inject vitality to your space.

ECONYL®
Made with 100% Regenerated Nylon

The finest carpet yarn

The ECONYL® yarn used to create the EVOLUTION Collection is an important factor contributing to the integrity and resilience of the carpet and goes a long way in determining the overall performance of the product.

The ECONYL® fibres used to make the EVOLUTION Collection result in a carpet designed to perform in the most demanding environments and is able to withstand high levels of traffic and heavy contact along with intensive commercial cleaning. The range falls into the highest of 3 commercial categories, class 33-heavy usage, which determines a carpets resistance to wear and change in appearance over time, resulting in a hardwearing, durable flooring solution.

Key features of ECONYL® fibre include:

- Stain and soil resistance
- Enhanced texture and colour
- 100% regenerated and recyclable
- Solution dyed yarn
- Resilience to wear
- Colour fastness

BREEAM®

Setting the standards for sustainable design

The EVOLUTION Collection will undergo BRE Certification over the coming months and we believe that it will receive the same Green Guide rating as the ECONOMIX Range, which has been certified with an A to A+, as it is manufactured in a similar way.

The BRE Environmental Assessment Method is the leading and most widely used environmental assessment method for buildings. It sets the standard for best practice in sustainable design and has become the de facto measure used to describe a building's environmental performance. Certification gives you confidence that products and services will perform as expected. It ensures that they meet - and continue to meet - appropriate standards, through a combination of regular company audits and a schedule of ongoing tests.

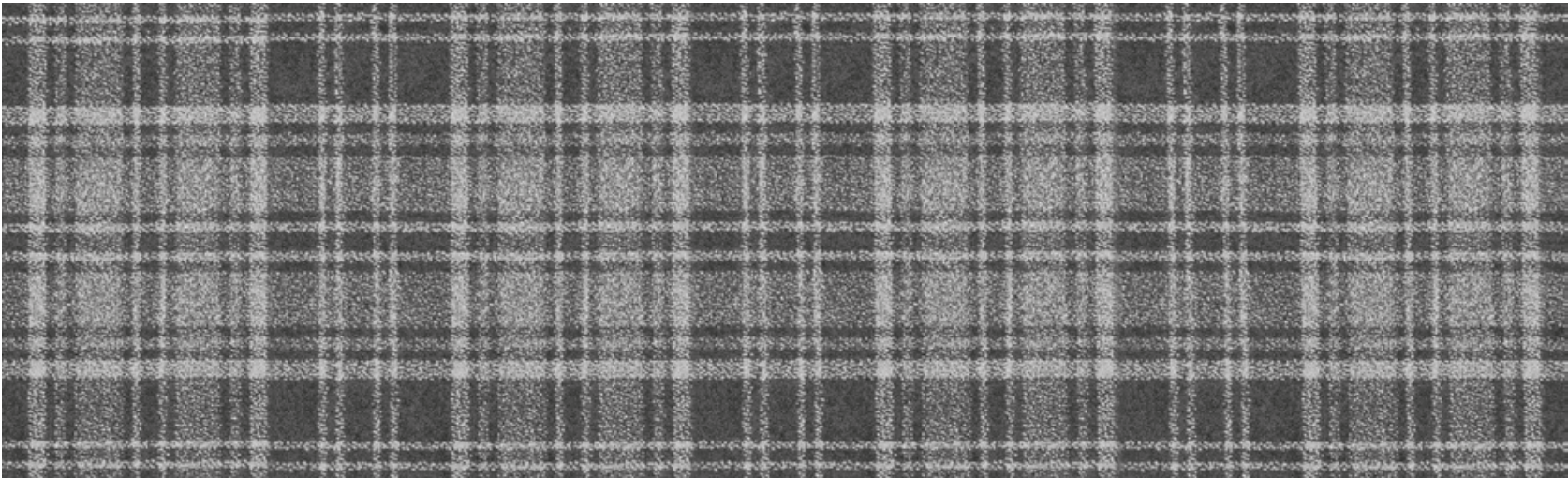
THE FUTURE OF CARPET IS EVOLVING



ORIGIN



3666 573



0 Metres

1.0

Patten Repeat: 40cm x 45cm



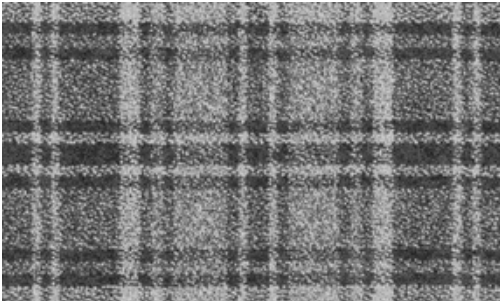
3666 522



3666 550



3666 573



3666 576



3666 578



3666 561



3666 565



3666 544



3666 598



3666 587

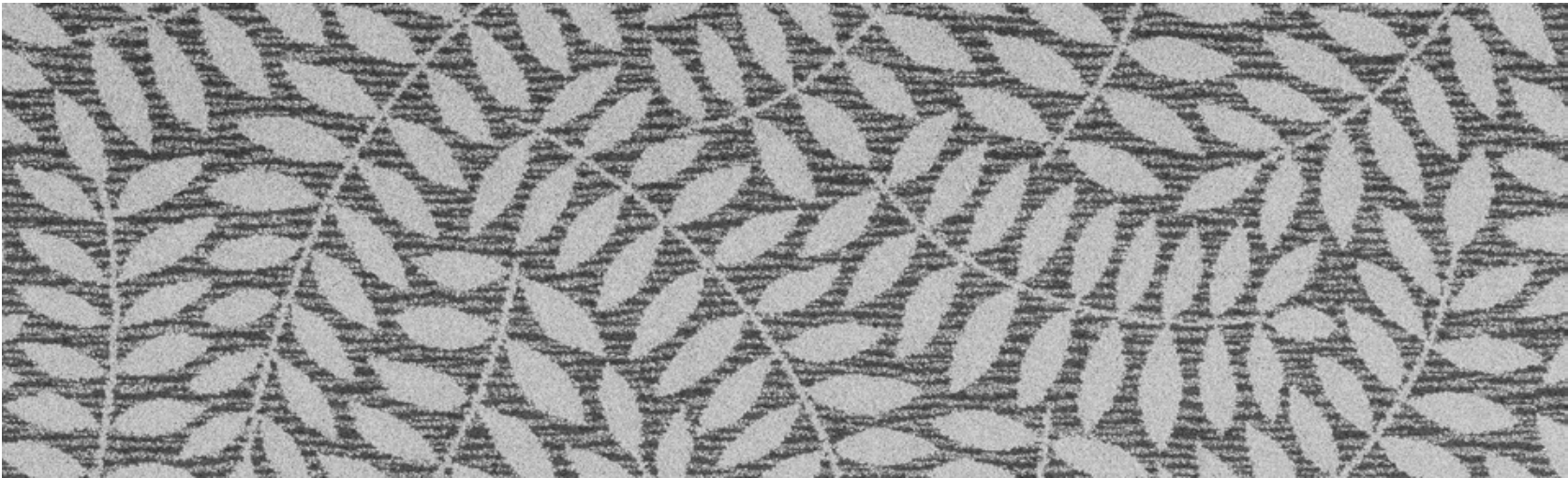


3666 590

FOREST



3666 198



0 Metres

1.0

Patten Repeat: 200cm x 100cm



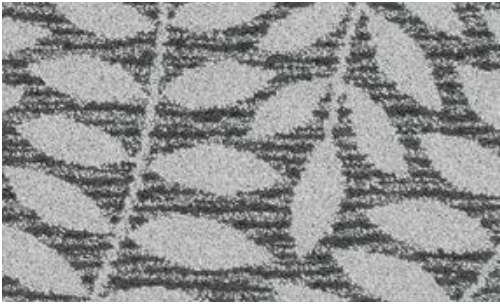
3666 122



3666 150



3666 173



3666 176



3666 178



3666 161



3666 165



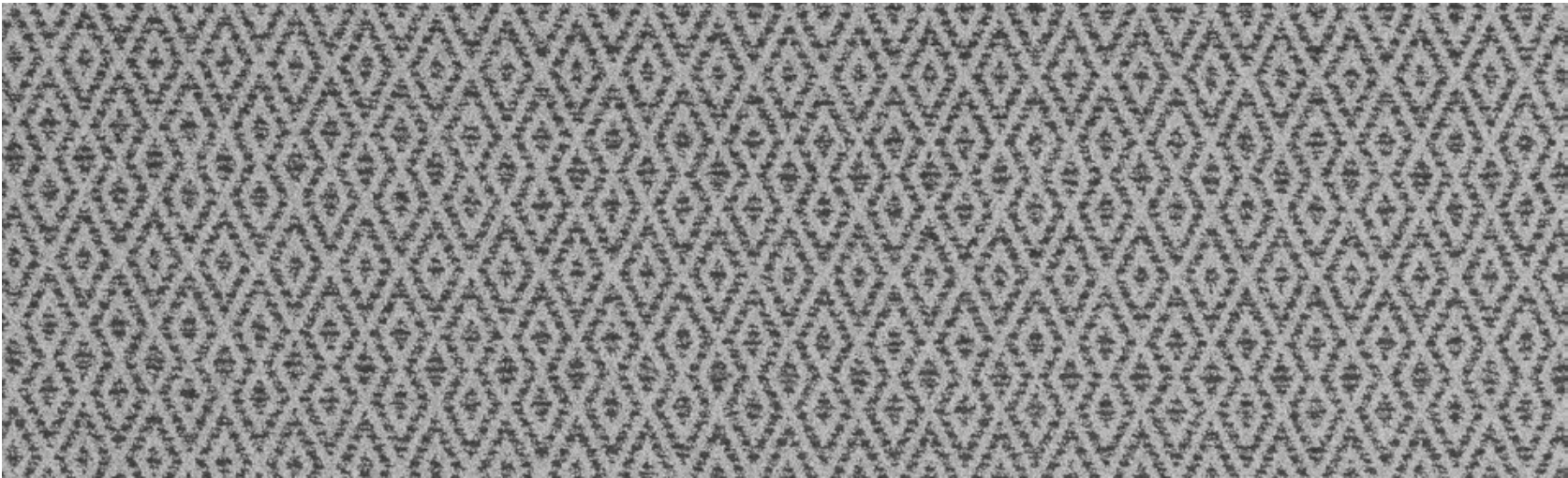
3666 144



3666 198



3666 287



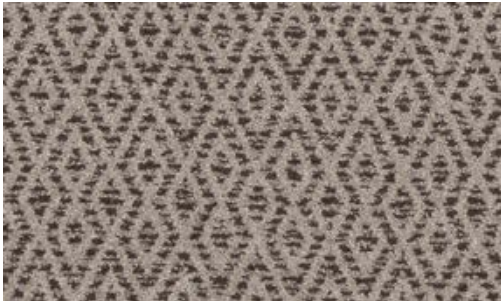
0 Metres

1.0

Patten Repeat: 80cm x 38cm



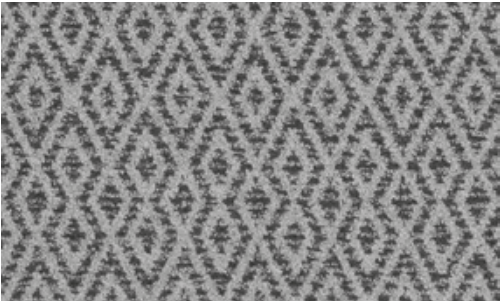
3666 222



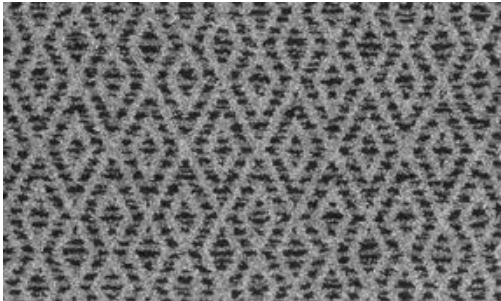
3666 250



3666 273



3666 276



3666 278



3666 261



3666 265



3666 244



3666 298



3666 287



3666 290

TECHNICAL SPECIFICATION	EVOLUTION COLLECTION	STANDARD												
Design Pattern Identification	3666													
Method of Manufacture	Tufted "Colorpoint LCL"													
Gauge	1/8" Gauge													
Measures	Rolls approx 4.00 Mts width													
Surface	Cut Pile Patterned													
Colouration	Solution Dyed													
Yarn Fibre	100% ECONYL® Regenerated Nylon 6 yarn													
Pattern Repeat	<table><tr><td></td><td>Width</td><td>Length</td></tr><tr><td>Origin</td><td>40cm</td><td>45cm</td></tr><tr><td>Forest</td><td>200cm</td><td>100cm</td></tr><tr><td>Geo Form</td><td>80cm</td><td>38cm</td></tr></table>		Width	Length	Origin	40cm	45cm	Forest	200cm	100cm	Geo Form	80cm	38cm	
	Width	Length												
Origin	40cm	45cm												
Forest	200cm	100cm												
Geo Form	80cm	38cm												
Total Weight M²	3250 Grams / Mt²	ISO 8543												
Inserted Pile Weight M²	1250 Grams / Mt²	ISO 8543												
Total Thickness	7.50 mm	ISO 1765												
Pile Height Above Substrate	5.00 mm													
Tufy Density	approx 154,000 / Mt²													
Primary Backing	Woven Polyester													
Backing	Ti BAC (Textile Impervious)													
PERFORMANCE TEST														
Flammability / Burning Classification	Cfl S1	EN13501 -1												
Electrostatic Properties	Permanent Antistatic <2 KW													
Thermal Resistance (TOG)	1.5	BS4745:2005												
Classification EN1307	33 Commercial Use	ISO 10361												
Castor Chair Suitability	Class A (Continuous use)	EN985, Test A												
Reduction of Transmitted Impact Noise	28 dB	BS EN ISO 140-8												
Colour Fastness to Light	>6	EN ISO 105 BO2												
Luxury rating	LC4	EN1307												
Stain Release (Scale 1-8) 8 is Best	6	3M test procedure												
Soiling Test (Scale 1-5) 5 is Best	3	ISO 11378 - 1:2000												
VOC Emissions Test	Indoor Air Comfort GOLD	Eurofins												

Colour Selection

Although the EVOLUTION Collection is designed to minimise visual soiling, it is strongly recommended that care be taken in choosing colours to suit particular locations. Medium to dark coloured carpets disguise soiling more effectively than plain, light shades and should therefore be considered for high traffic areas such as corridors.

Tolerances

Product specifications are derived from averages in yarn, fibre, temperature and colour which may vary within the standard industry tolerances. Performance is not affected by such variations.

Wastage

All joins should be made using a trimming tool to avoid fraying and joints sealed using a seaming adhesive. Careful consideration should be given to pattern repeats across the width and length when planning your installation.

Pressure Markings

Pressure marks result during the manufacturing of large rolls of carpet. These faint lines can also be a result of rolls resting in racks where they are subjected to considerable pressure. As a result unavoidable pressure lines are often visible when the carpet is first unrolled, but should not cause any concern. The lines will not affect performance and will disappear within a few weeks of normal use. Thorough and regular vacuuming can also assist with removing the lines.

Care & Maintenance

Instructions for the maintenance of carpets are available from danfloor upon request or can be downloaded from www.danfloor.co.uk. It is recommended that a maintenance schedule be initiated from the date of installation to achieve maximum life expectancy of the product.

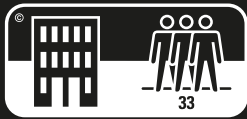
Ti Bac Impervious

Manufactured to conform to the latest standards in impermeability, Ti Bac impervious by danfloor guarantees the customer protection against sub-floor contamination. Situated beneath the carpet substrate and above the textile backing the impervious membrane has been designed to allow sub-floor moisture evaporation via the textile backing whilst preventing surface liquid penetration.

Suitable for use with under floor heating systems the Ti BAC acts as a non-thermal insulator, reduces sound impact levels and provides a cost effective built in cushioned underlay.

Installation

Prior to cutting and installation all carpets should be unrolled and inspected to ensure all quality standards have been met. When installing impervious backed carpets we recommend that joins should be kept to a minimum and that no joins should be placed within the main body of a room or any location that could undermine the integrity or functionality of an impervious backed carpet. Prior to installation approval should be sought with the client as to the location of all joins. Installation must be carried out by an approved carpet installer in accordance to BS5325:2001. A full Installation Guide, including recommended adhesives, can be downloaded from www.danfloor.co.uk



ECONYL®
Made with 100% Regenerated Nylon

BREEAM®

danfloor
An Ulster Group Company

danfloor Uk Ltd
106 Longmead Road, Emerald Park, Emersons Green
Bristol BS16 7FG, United Kingdom
T: 0333 014 3132, F: 0333 014 3134
E: info@danfloor.co.uk
www.danfloor.co.uk

danfloor Denmark
danfloor a/s, Østerbro 9, DK-6933 Kibæk Denmark
T: +45 9699 1900, F: +45 9699 1999
E: sales@danfloor.com
www.danfloor.com

