

Performance Appearance Durable

danfloor
An Ulster Group Company

Soiling and Stain Resistant

Solution Dyed Fibre

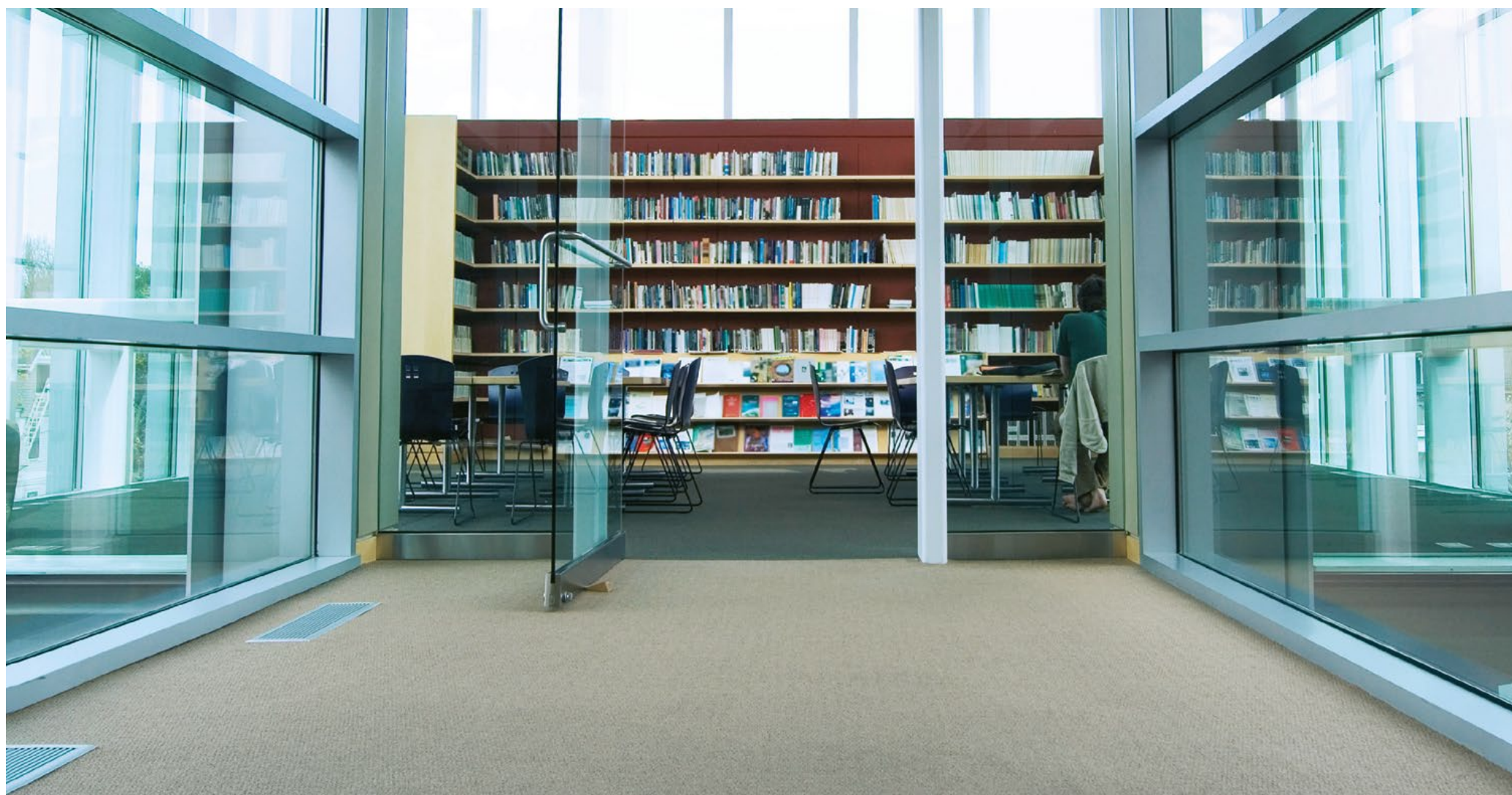
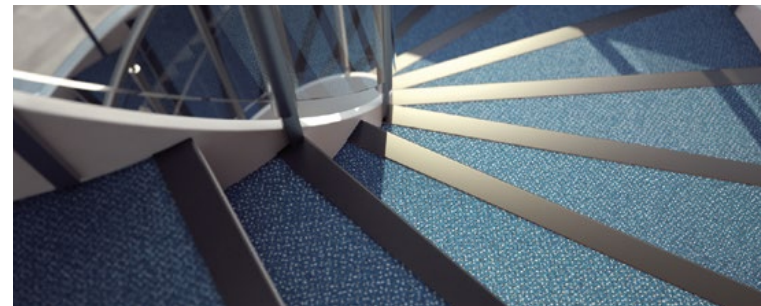
Colour and Design

Care in Business

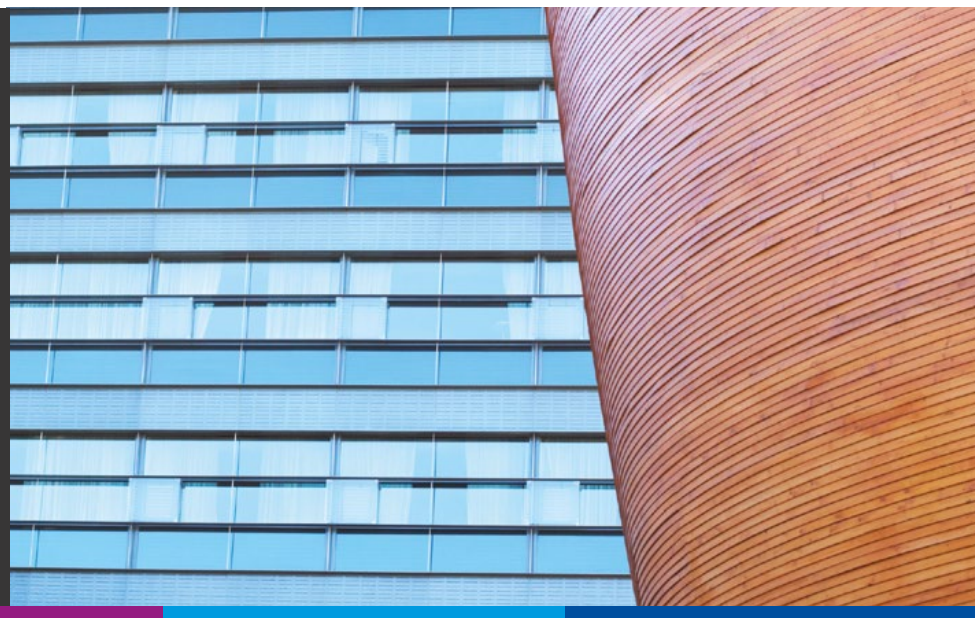
Environmental

A range of carpets for the healthcare, commercial, education, hospitality and leisure industries.

RESPONSE



RESPONSE



Response is a range consisting of 24 colours available in both cut and loop pile designs offering a variety of options for commercial interiors. Made from the 100% sustainable yarn ECONYL, the polyamide 6 fibre results in a carpet that has outstanding performance characteristics and is suitable for high traffic areas.



The finest carpet yarn

The ECONYL yarn used to create the Response range is an important factor contributing to the integrity and resilience of the carpet and goes a long way in determining the overall performance of the product.

The ECONYL fibres used to make the Response range results in a carpet designed to perform in the most demanding environments and is able to withstand high levels of traffic and heavy contact along with intense commercial cleaning. The range falls into the highest of 3 commercial categories, class 33-heavy usage, which determines a carpets resistance to wear and change in appearance over time, resulting in a hardwearing, durable flooring solution.

Key features of ECONYL® include:

- Stain and soil resistance
- Enhanced texture and colour
- 100% sustainable and recyclable
- Solution dyed yarn
- Resilience to wear
- Colour fastness

Colour Fastness

The colours of the ECONYL solution dyed yarn are created from individual nonphotosensitive and non-soluble pigments guaranteeing extreme light, water, shampoo and bleach fastness (ISO 105).

Stain and soil resistance

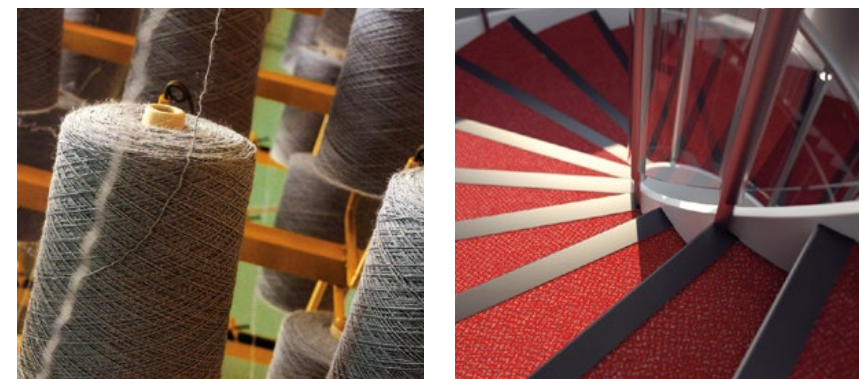
The special polymer of the ECONYL yarn repels acid stains, minimising the chemical adhesion making your carpet easy to clean. In addition to this the unique tri-lobal filament cross section of the yarn also reduces soil adhesion, making soil removal easier and less visible.

Cleaning and Maintenance

The use of the ECONYL yarn is recommended for any sector where carpet cleaning and disinfection is particularly aggressive. Using bleach based products on Econyl carpets will not result in loss of colour.

Certification

All ECONYL yarns are certified with the Oeko-Tex label to provide the highest level of safety when used in schools or in a child care setting.

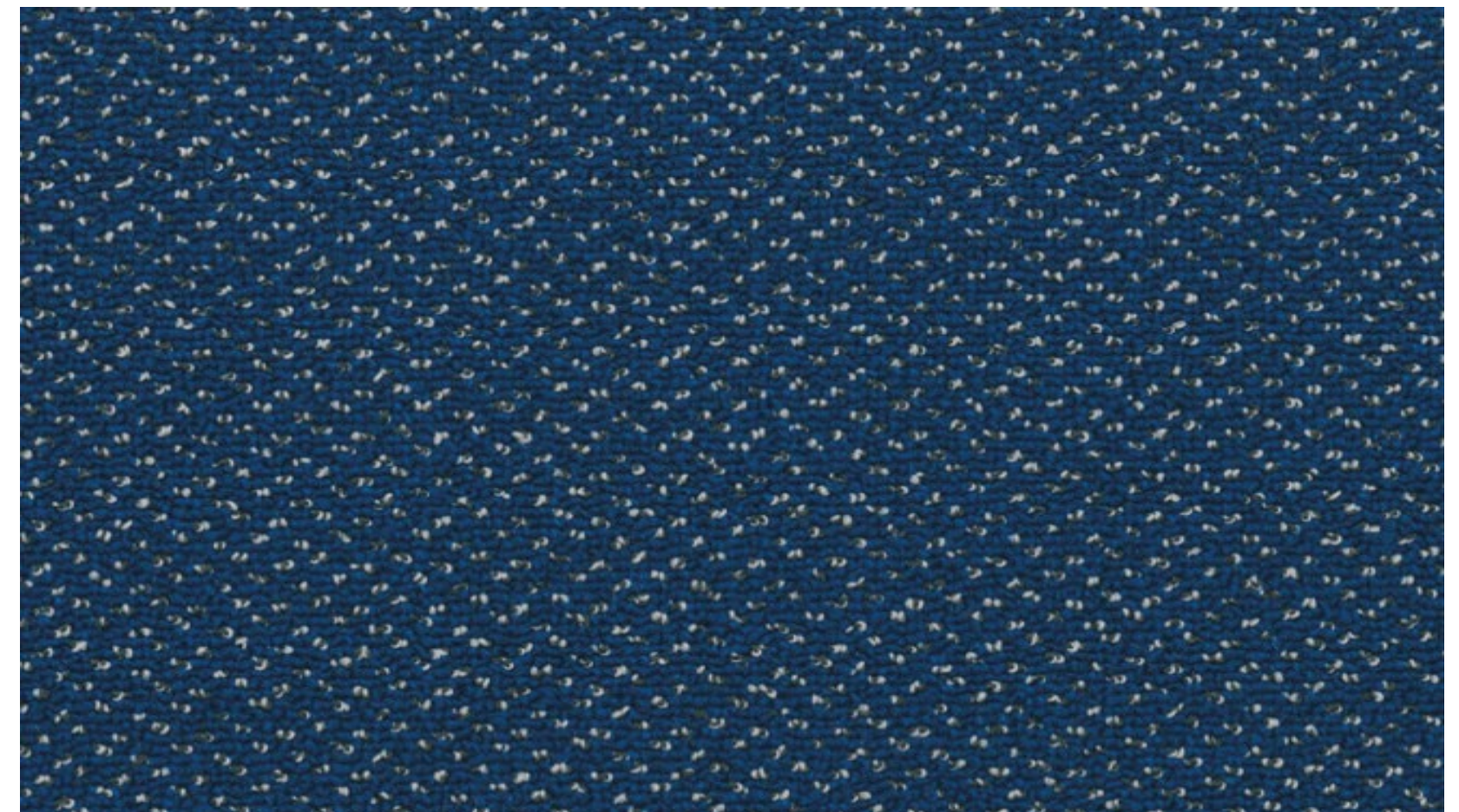


RESPONSE COLLECTION



Response Cut

RC618 303 



Response Loop

RL618 303 

COMMERCIAL

HEALTHCARE

EDUCATION

Care in Business

Environmental/Recycling

Quality Control

Innovative

Colour

Texture

Trend

Static Protection

Soiling & Stain Resistant

Colour/Light - Fastness

Custom

Thermal Insulation

Sound Absorption

Noise Control

Performance Warranted



RL618 301



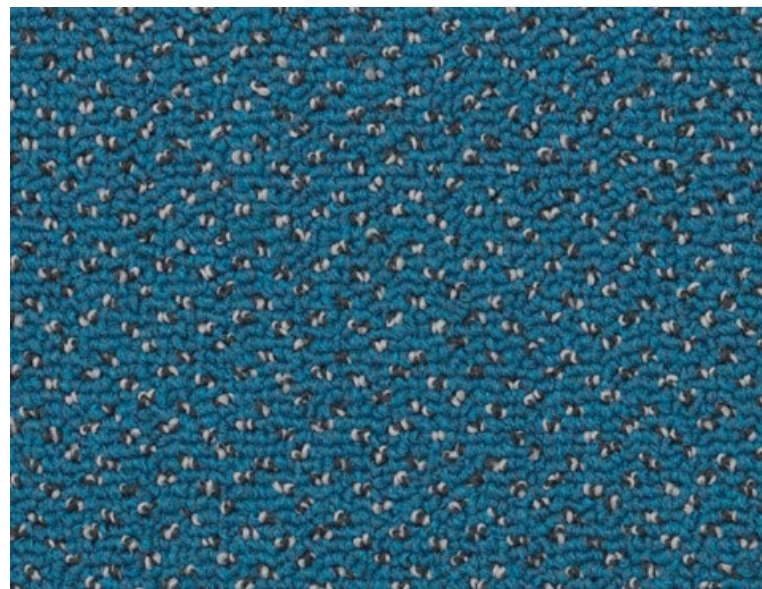
RL618 302



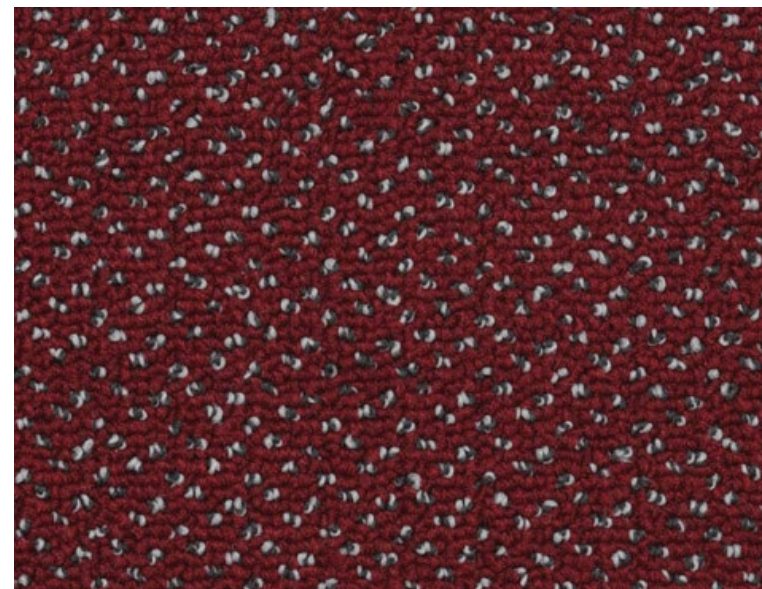
RL618 303



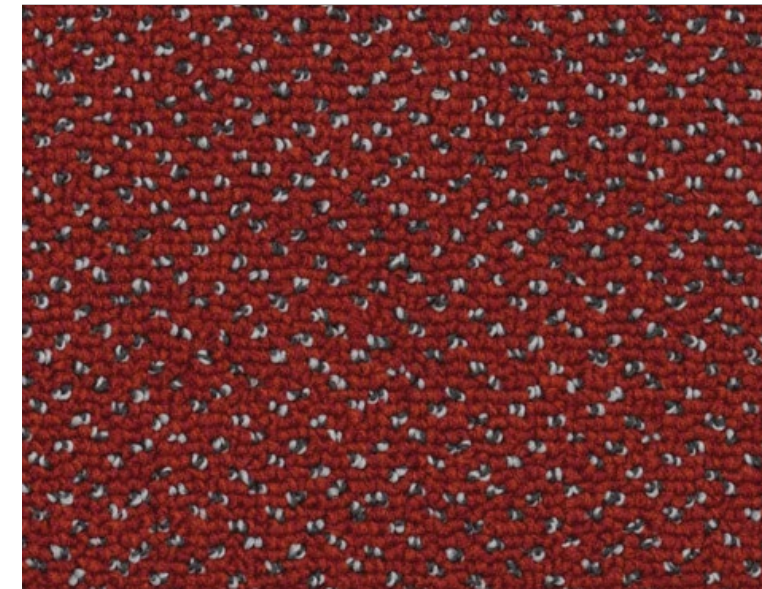
RL618 304



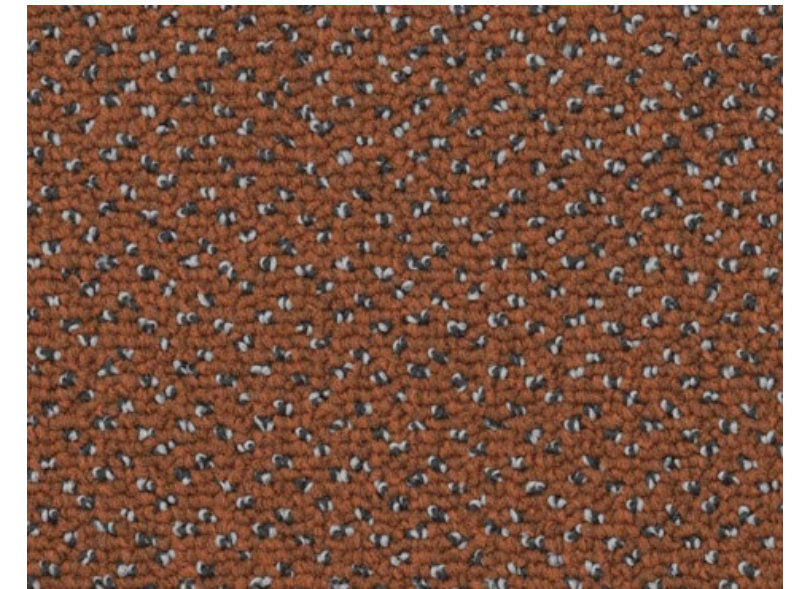
RL618 305



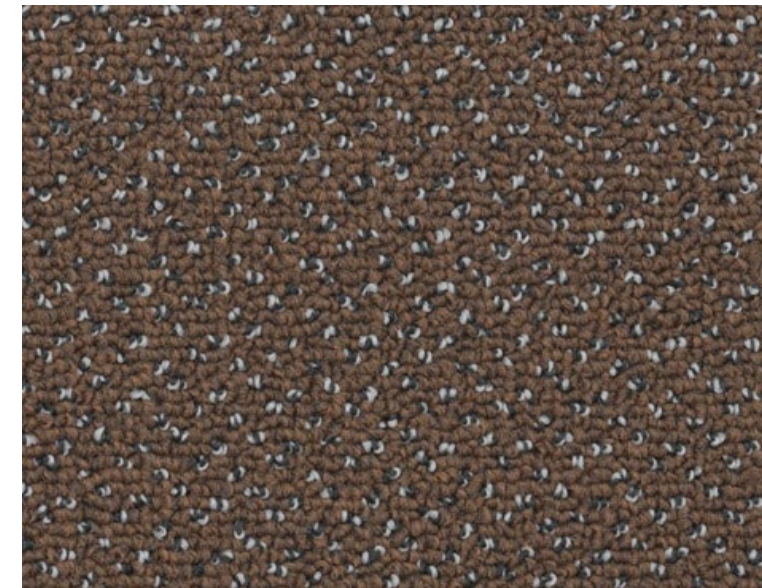
RL618 101



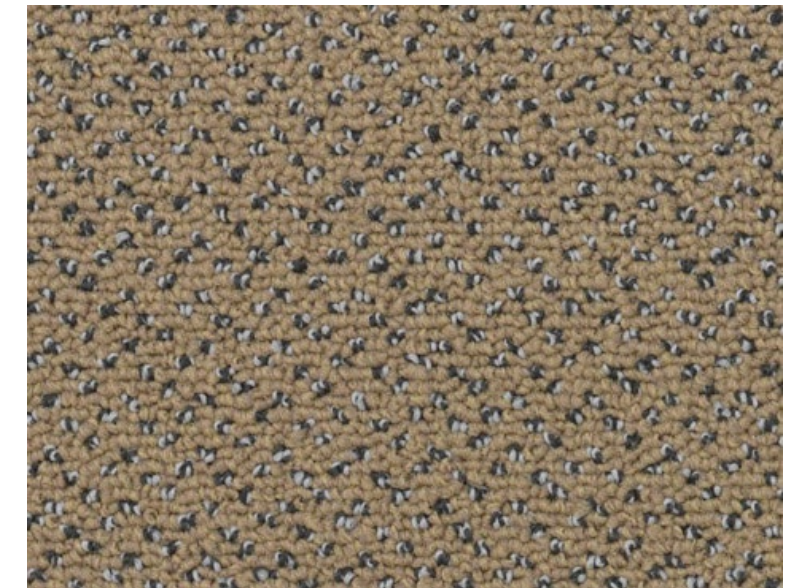
RL618 102



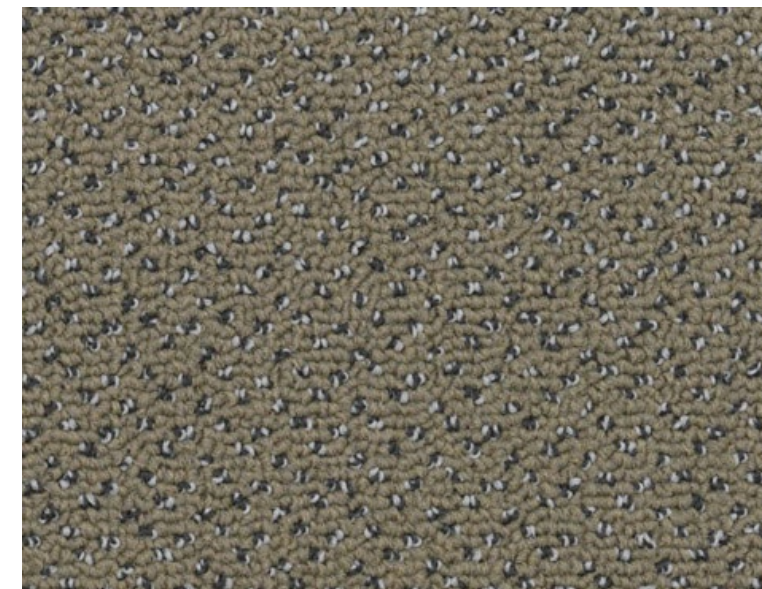
RL618 103



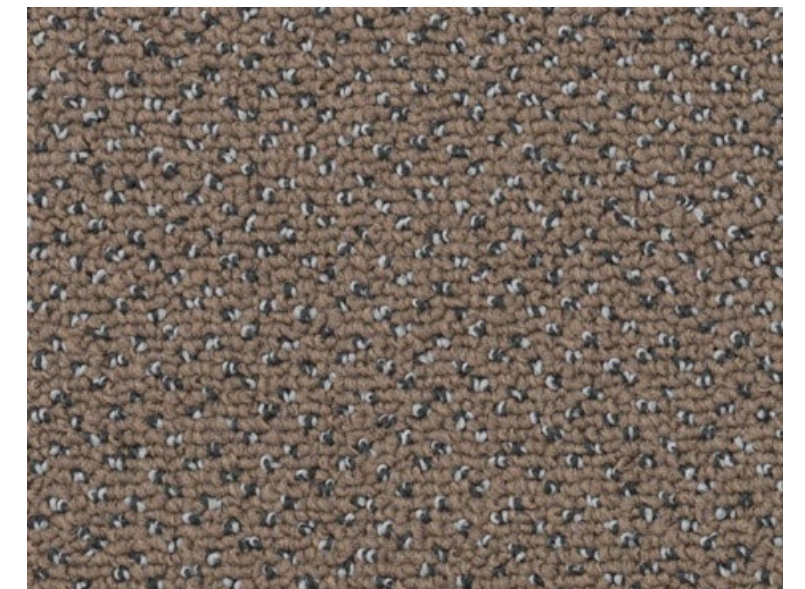
RL618 702



RL618 201



RL618 404



RL618 801



COMMERCIAL
HEALTHCARE
EDUCATION

Care in Business

Environmental/Recycling

Quality Control

Innovative

Colour

Texture

Trend

Static Protection

Soiling & Stain Resistant

Colour/Light - Fastness

Custom

Thermal Insulation

Sound Absorption

Noise Control

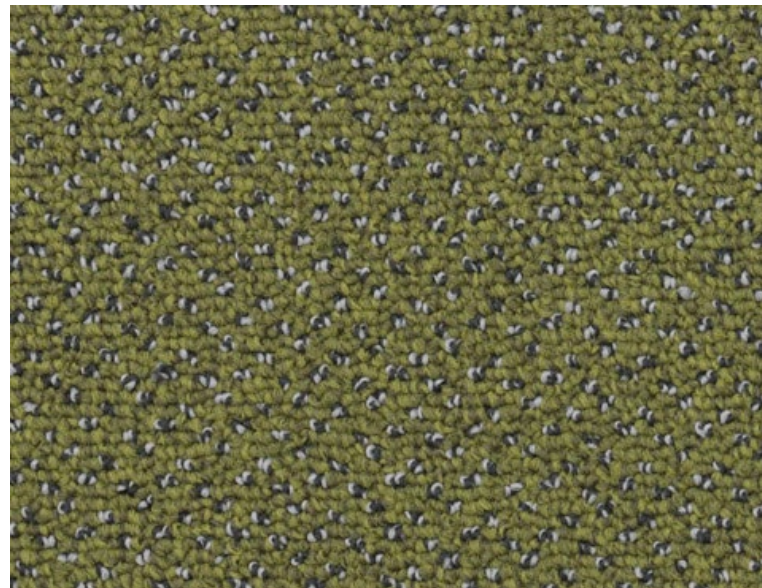
Performance Warranted



RL618 401



RL618 504



RL618 403



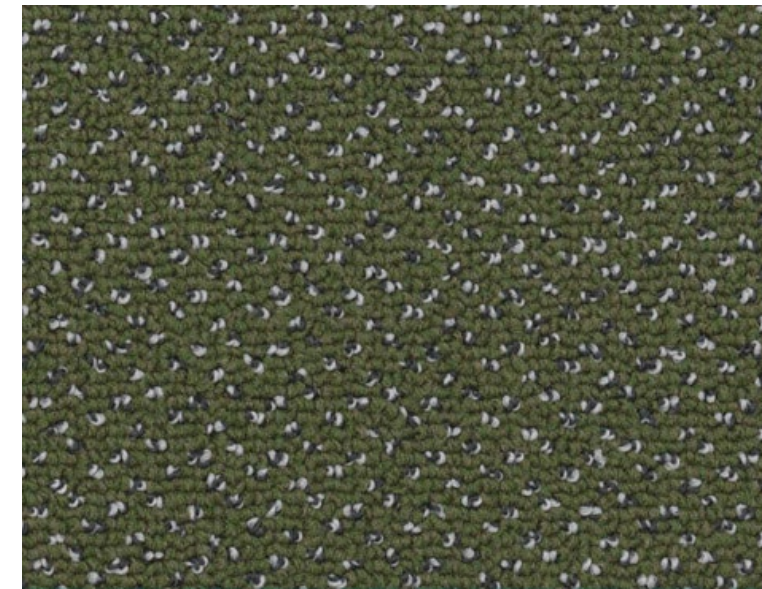
RL618 904



RL618 502



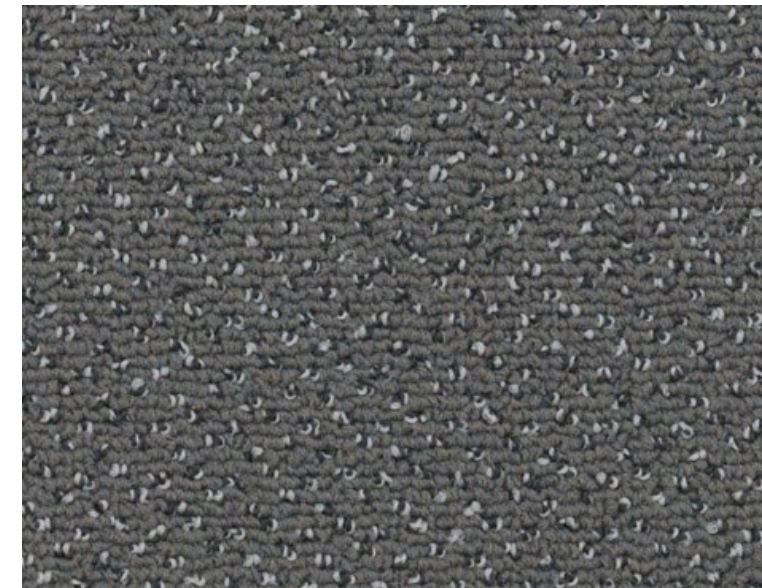
RL618 902



RL618 402



RL618 701



RL618 501



RL618 901



RL618 503



RL618 903



SPECIFICATIONS



TECHNICAL SPECIFICATION	RESPONSE CUT	RESPONSE LOOP	STANDARD
Design Pattern Identification	RC618	RL618	
Method of Manufacture	Cut Pile Tufted	Loop Pile Tufted	DIN ISO 2424
Pile Fibre	Solution Dyed Nylon	Solution Dyed Nylon	
Yarn	Aquafil Econyl	Aquafil Econyl	
Gauge	1/10" Graphic Cut Pile	1/10" Graphic Loop Pile	DIN ISO 2424
Tuft Density	207,900 Mt. Sq.	218,000 Mt. Sq.	ISO 1763
Pile Height	3.60mm approx	3.20mm approx	ISO 1766
Primary Backing	100% Recycled	100% Recycled	DIN ISO 2424
Total Pile Weight	715gms Mt. Sq. approx	715gms Mt. Sq. approx	DIN ISO 2424
Total Product Weight	1900gms Mt. Sq. approx	2000gms Mt. Sq. approx	ISO 8543
Total Product Thickness	6.00mm approx	5.70mm approx	ISO 1765
Product Width	4.00 Mt.	4.00 Mt.	ISO 3018
Backing	Textile Backing	Textile Backing	DIN ISO 2424
PERFORMANCE TEST			
Castor Chair Suitability*	A - Continuous Use*	A - Continuous Use*	BS EN 1307
Euro Class Radiant Panel Fire Test	Cfl - s1	Cfl - s1	DIN IEC 1350-1
Electrostatic Properties	approx. ≤10/9 Ohm	approx. ≤10/9 Ohm	DIN 1340-4-1
Wear Classification	Commercial Heavy - (33)	Commercial Heavy - (33)	EN 1307
Thermal Resistance	0.05 m ² k/w	0.05 m ² k/w	BS 4745 (ISO 8302)
Reduction of Transmitted Impact Noise	24 dB	25 dB	BS EN ISO 140-8
Acoustics - Measurement of Sound Absorption in a Reverberation Room	Classification E	Classification E	BS EN ISO 354:2003
Colour Fastness Tests			
Light (1-8 Scale)	Min 6	Min 6	ISO 105 - B02
Rub Fastness			
Water Fastness(1-5 Scale)	Min 4	Min 4	DIN EN ISO 105 E01
Resistance to Abrasion (1-5 Scale)	Min 3 - 4	Min 3 - 4	DIN EN ISO 105 X12

* as from fitted area of > 6 Sq Mts

Colour Selection

Although the Response range is designed to minimise visual soiling, it is strongly recommended that care be taken in choosing colours to suit particular locations. Medium to dark coloured carpets disguise soiling more effectively than plain, light shades and should therefore be considered for high traffic areas such as corridors.

Tolerances

Product specifications are derived from averages in yarn, fibre, temperature and colour which may vary within the standard industry tolerances. Performance is not affected by such variations.

Care & Maintenance

Carpet should be cleaned daily with a vacuum cleaner, preferably one with a beater action. Spillages should be taken up promptly and surface stains removed by an appropriate method as soon as possible. Instructions for the maintenance of carpets are available from danfloor upon request or can be downloaded from www.danfloor.co.uk. It is recommended that a maintenance schedule be initiated from the date of installation to achieve maximum life expectancy of the product. Chair pads are required under roller castor chairs to prevent accelerated wear and to preserve appearance retention. Please note that loop pile carpets may be damaged if not adequately protected from sharp objects.

Installation

Prior to cutting and installation all carpets should be unrolled and inspected to ensure all quality standards have been met. Approval should be sought with the client as to the location of all joins. Installation must be carried out by an approved carpet installer in accordance to BS5325:2001. A full Installation Guide, including recommended adhesives, can be downloaded from www.danfloor.co.uk



ECONYL®

danfloor
An Ulster Group Company

Innovative Carpet Solutions

danfloor Uk Ltd
106 Longmead Road, Emerald Park, Emersons Green
Bristol BS16 7FG, United Kingdom
T: 0333 014 3132, F: 0333 014 3134
E: info@danfloor.co.uk

Danfloor Denmark
danfloor a/s, Østerbro 9, DK-6933 Kibæk
T: +45 9699 1900, F: +45 9699 1999

www.danfloor.co.uk