

# EVOLUTION

C O L L E C T I O N 01



SCAPE



GLAZE



MANHATTAN



# EVOLUTION

## COLLECTION 01

The EVOLUTION Collection is a stunning new range providing a beautiful foundation for your interior design scheme. Manufactured using Aquafil's ECONYL® Nylon yarn, which is 100% regenerated and infinitely regenerable, EVOLUTION offers an environmentally conscious option with a strong design focus. The Collection offers a variety of options from subtle delicate designs to bold statement pieces and with an on-trend palette of colours it allows you to create an elegant space full of character.



### SLATE

This subtle linear effect will add texture and depth to your carpet and is a common feature running through the rest of the EVOLUTION Collection.

### GLAZE

Inspired by the natural landscape and geometric angular shapes Glaze allows you to utilise pattern in a stylish and minimalistic way.

### MANHATTAN

Inspired by the aerial landscape of Manhattan this new range brings a large scale structural pattern into a contemporary design.

**ECONYL®**  
Made with 100% Regenerated Nylon

#### The finest carpet yarn

The ECONYL® yarn used to create the EVOLUTION Collection is an important factor contributing to the integrity and resilience of the carpet and goes a long way in determining the overall performance of the product.

The ECONYL® fibres used to make the EVOLUTION Collection result in a carpet designed to perform in the most demanding environments and is able to withstand high levels of traffic and heavy contact along with intensive commercial cleaning. The range falls into the highest of 3 commercial categories, class 33-heavy usage, which determines a carpets resistance to wear and change in appearance over time, resulting in a hardwearing, durable flooring solution.

Key features of ECONYL® fibre include:

- Stain and soil resistance
- Enhanced texture and colour
- 100% regenerated and recyclable
- Solution dyed yarn
- Resilience to wear
- Colour fastness

### BREEM®

#### Setting the standards for sustainable design

The EVOLUTION Collection will undergo BRE Certification over the coming months and we believe that it will receive the same Green Guide rating as the ECONOMIX Range, which has been certified with an A to A+, as it is manufactured in a similar way.

The BRE Environmental Assessment Method is the leading and most widely used environmental assessment method for buildings. It sets the standard for best practice in sustainable design and has become the de facto measure used to describe a building's environmental performance. Certification gives you confidence that products and services will perform as expected. It ensures that they meet - and continue to meet - appropriate standards, through a combination of regular company audits and a schedule of ongoing tests.

## THE FUTURE OF CARPET IS EVOLVING

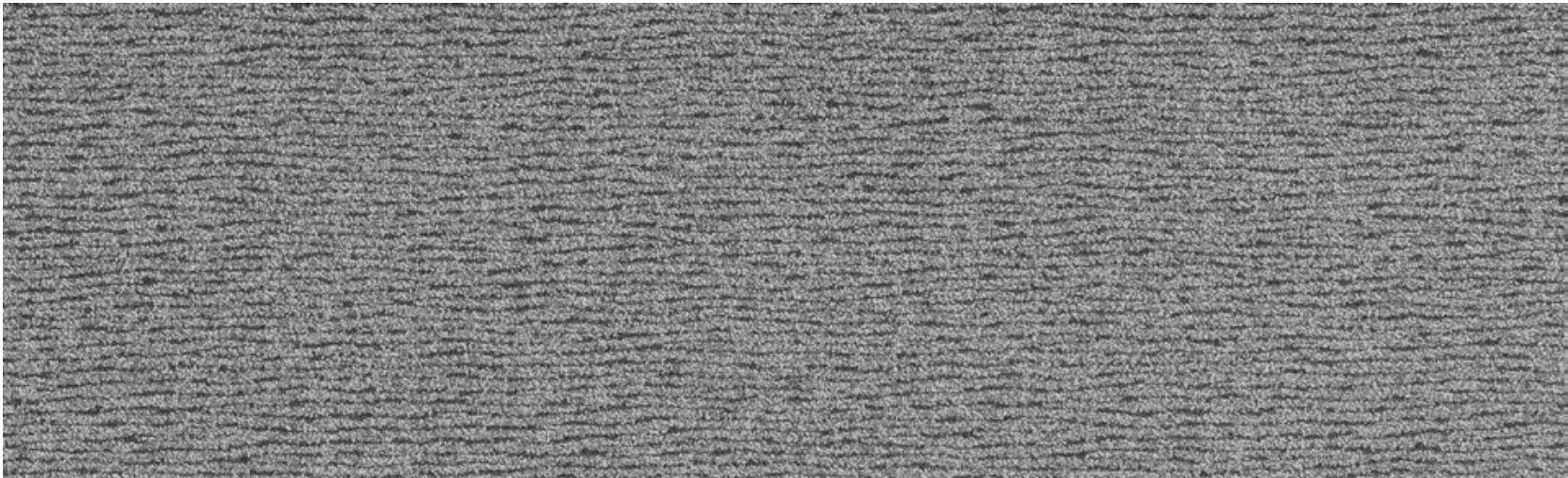




SCAPE



3666 676



0 Metres

1.0

Patten Repeat: 80cm x 38cm



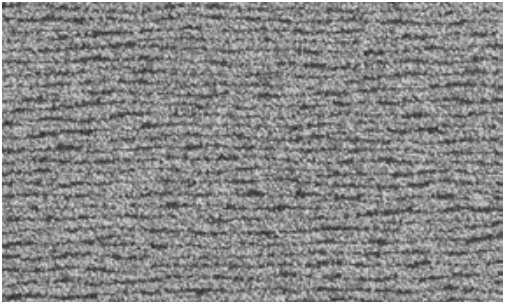
3666 622



3666 650



3666 673



3666 676



3666 678



3666 661



3666 665



3666 644



3666 698



3666 687



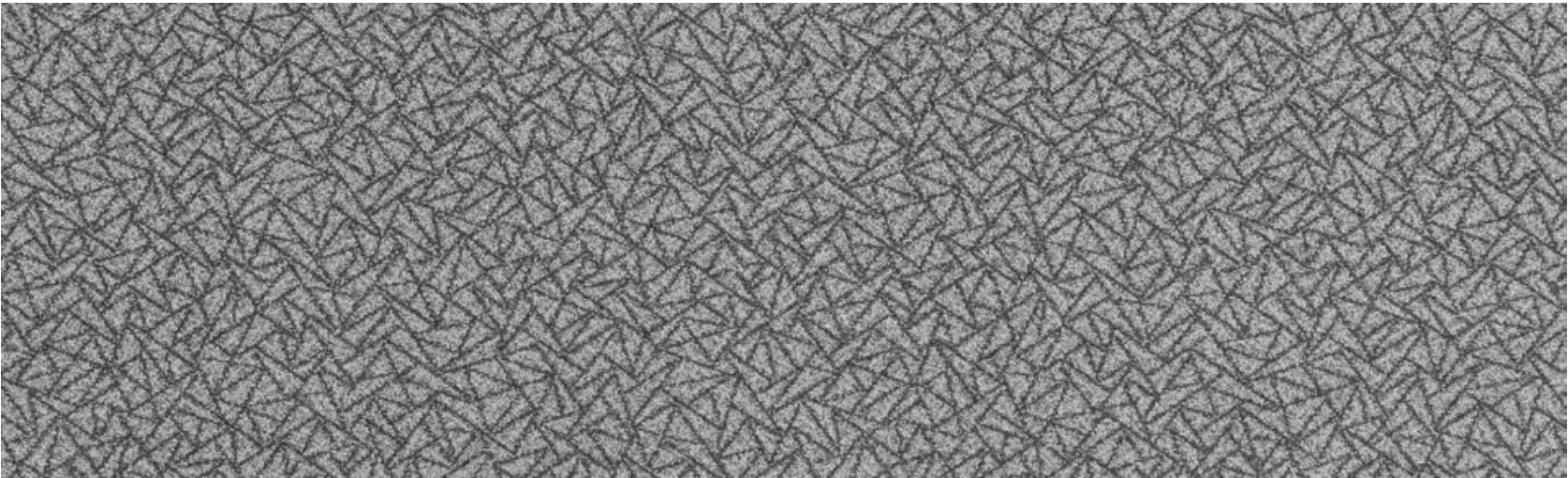
3666 690



# GLAZE



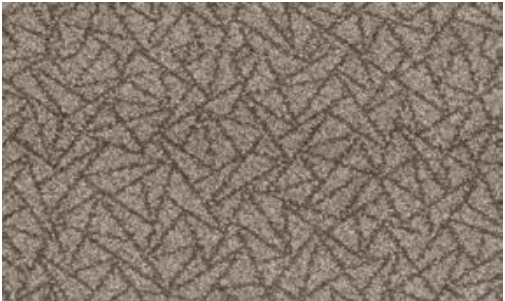
3666 387



0 Metres

1.0

Patten Repeat: 80cm x 38cm



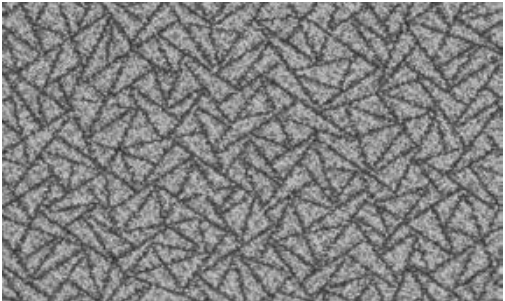
3666 322



3666 350



3666 373



3666 376



3666 378



3666 361



3666 365



3666 344



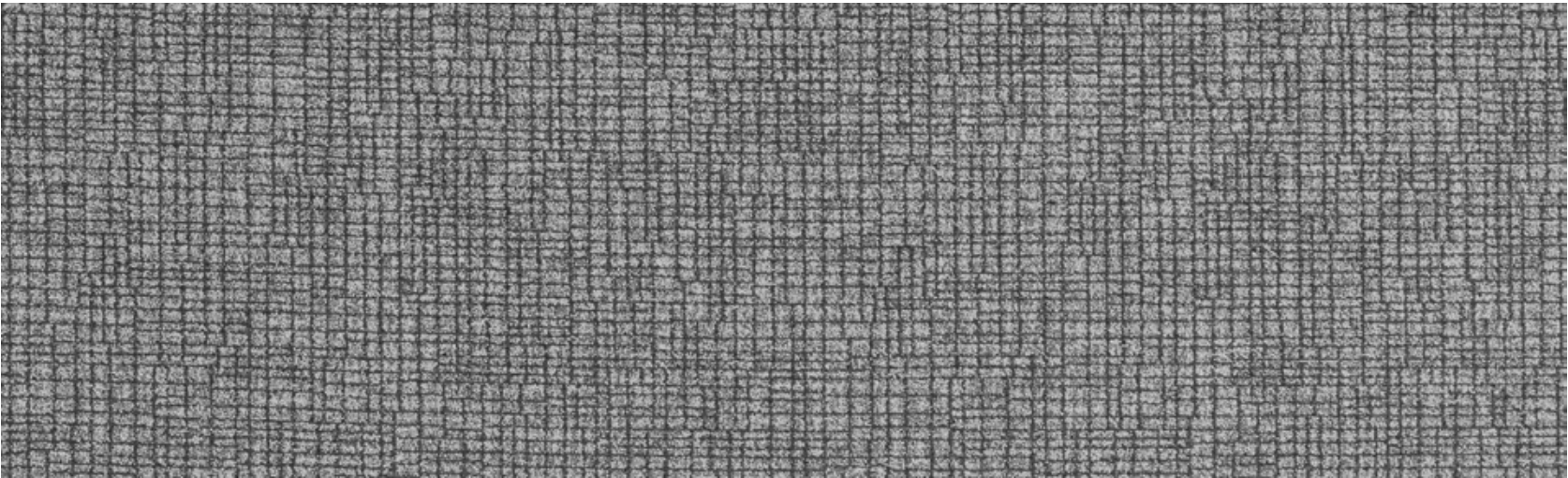
3666 387



# MANHATTAN



3666 473



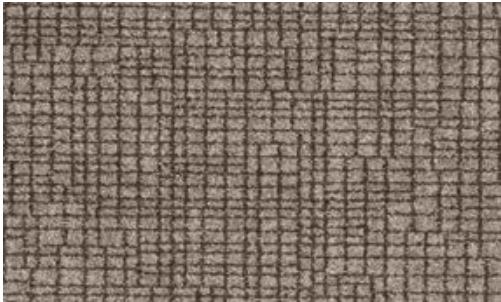
0 Metres

1.0

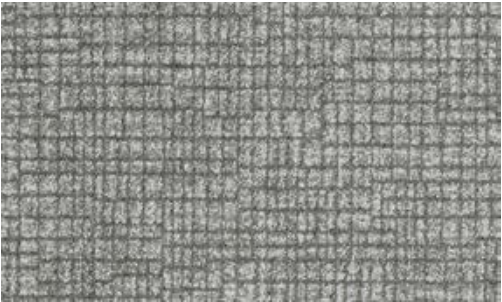
Patten Repeat: 80cm x 67.5cm



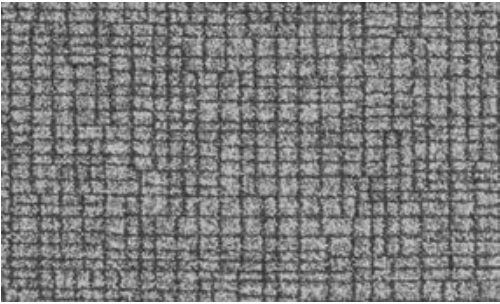
3666 422



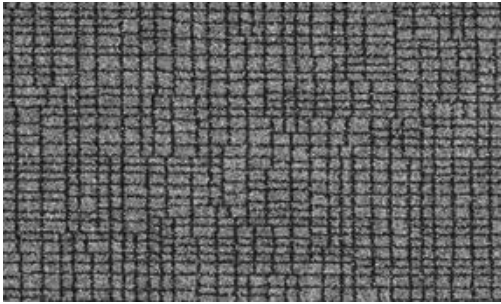
3666 450



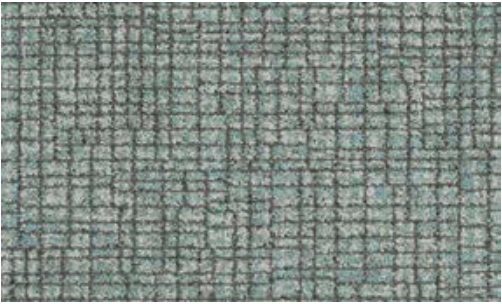
3666 473



3666 476



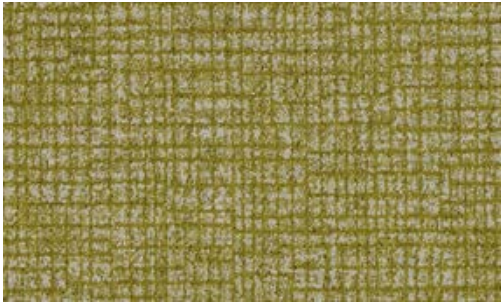
3666 478



3666 461



3666 465



3666 444



3666 498



TECHNICAL SPECIFICATION	EVOLUTION COLLECTION	STANDARD												
<b>Design Pattern Identification</b>	3666													
<b>Method of Manufacture</b>	Tufted "Colorpoint LCL"													
<b>Gauge</b>	1/8" Gauge													
<b>Measures</b>	Rolls approx 4.00 Mts width													
<b>Surface</b>	Cut Pile Patterned													
<b>Colouration</b>	Solution Dyed													
<b>Yarn Fibre</b>	100% ECONYL® Regenerated Nylon 6 yarn													
<b>Pattern Repeat</b>	<table><tr><td></td><td>Width</td><td>Length</td></tr><tr><td>Scape</td><td>80cm</td><td>38cm</td></tr><tr><td>Glaze</td><td>80cm</td><td>38cm</td></tr><tr><td>Manhattan</td><td>80cm</td><td>67.5cm</td></tr></table>		Width	Length	Scape	80cm	38cm	Glaze	80cm	38cm	Manhattan	80cm	67.5cm	
	Width	Length												
Scape	80cm	38cm												
Glaze	80cm	38cm												
Manhattan	80cm	67.5cm												
<b>Total Weight M²</b>	3250 Grams / Mt²	ISO 8543												
<b>Inserted Pile Weight M²</b>	1250 Grams / Mt²	ISO 8543												
<b>Total Thickness</b>	7.50 mm	ISO 1765												
<b>Pile Height Above Substrate</b>	5.00 mm													
<b>Tufy Density</b>	approx 154,000 / Mt²													
<b>Primary Backing</b>	Woven Polyester													
<b>Backing</b>	Ti BAC (Textile Impervious)													
<b>PERFORMANCE TEST</b>														
<b>Flammability / Burning Classification</b>	Cfl S1	EN13501 -1												
<b>Electrostatic Properties</b>	Permanent Antistatic <2 KW													
<b>Thermal Resistance (TOG)</b>	1.5	BS4745:2005												
<b>Classification EN1307</b>	33 Commercial Use	ISO 10361												
<b>Castor Chair Suitability</b>	Class A (Continuous use)	EN985, Test A												
<b>Reduction of Transmitted Impact Noise</b>	28 dB	BS EN ISO 140-8												
<b>Colour Fastness to Light</b>	>6	EN ISO 105 BO2												
<b>Luxury rating</b>	LC4	EN1307												
<b>Stain Release (Scale 1-8) 8 is Best</b>	6	3M test procedure												
<b>Soiling Test (Scale 1-5) 5 is Best</b>	3	ISO 11378 - 1:2000												
<b>VOC Emissions Test</b>	Indoor Air Comfort GOLD	Eurofins												

## Colour Selection

Although the EVOLUTION Collection is designed to minimise visual soiling, it is strongly recommended that care be taken in choosing colours to suit particular locations. Medium to dark coloured carpets disguise soiling more effectively than plain, light shades and should therefore be considered for high traffic areas such as corridors.

## Tolerances

Product specifications are derived from averages in yarn, fibre, temperature and colour which may vary within the standard industry tolerances. Performance is not affected by such variations.

## Wastage

Evolution rolls and cuts come with a selvedge which requires trimming prior to installation. All joins should be made using a trimming tool to avoid fraying and joints sealed using a seaming adhesive. Careful consideration should be given to pattern repeats across the width and length when planning your installation.

## Pressure Markings

Pressure marks result during the manufacturing of large rolls of carpet. These faint lines can also be a result of rolls resting in racks where they are subjected to considerable pressure. As a result unavoidable pressure lines are often visible when the carpet is first unrolled, but should not cause any concern. The lines will not affect performance and will disappear within a few weeks of normal use. Thorough and regular vacuuming can also assist with removing the lines.

## Care & Maintenance

Instructions for the maintenance of carpets are available from danfloor upon request or can be downloaded from [www.danfloor.co.uk](http://www.danfloor.co.uk). It is recommended that a maintenance schedule be initiated from the date of installation to achieve maximum life expectancy of the product.

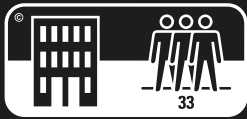
## Ti Bac Impervious

Manufactured to conform to the latest standards in impermeability, Ti Bac impervious by danfloor guarantees the customer protection against sub-floor contamination. Situated beneath the carpet substrate and above the textile backing the impervious membrane has been designed to allow sub-floor moisture evaporation via the textile backing whilst preventing surface liquid penetration.

Suitable for use with under floor heating systems the Ti BAC acts as a non-thermal insulator, reduces sound impact levels and provides a cost effective built in cushioned underlay.

## Installation

Prior to cutting and installation all carpets should be unrolled and inspected to ensure all quality standards have been met. When installing impervious backed carpets we recommend that joins should be kept to a minimum and that no joins should be placed within the main body of a room or any location that could undermine the integrity or functionality of an impervious backed carpet. Prior to installation approval should be sought with the client as to the location of all joins. Installation must be carried out by an approved carpet installer in accordance to BS5325:2001. A full Installation Guide, including recommended adhesives, can be downloaded from [www.danfloor.co.uk](http://www.danfloor.co.uk)



**danfloor**  
An Ulster Group Company

**danfloor Uk Ltd**  
106 Longmead Road, Emerald Park, Emersons Green  
Bristol BS16 7FG, United Kingdom  
T: 0333 014 3132, F: 0333 014 3134  
E: [info@danfloor.co.uk](mailto:info@danfloor.co.uk)  
[www.danfloor.co.uk](http://www.danfloor.co.uk)

**danfloor Denmark**  
danfloor a/s, Østerbro 9, DK-6933 Kibæk Denmark  
T: +45 9699 1900, F: +45 9699 1999  
E: [sales@danfloor.com](mailto:sales@danfloor.com)  
[www.danfloor.com](http://www.danfloor.com)

