

# EQUINOX™

## EVOLVE

Soiling and Stain Resistant

Solution Dyed Fibre

Anti-microbial

BRE Certified

Impervious



Elegant. Reliable. Timeless

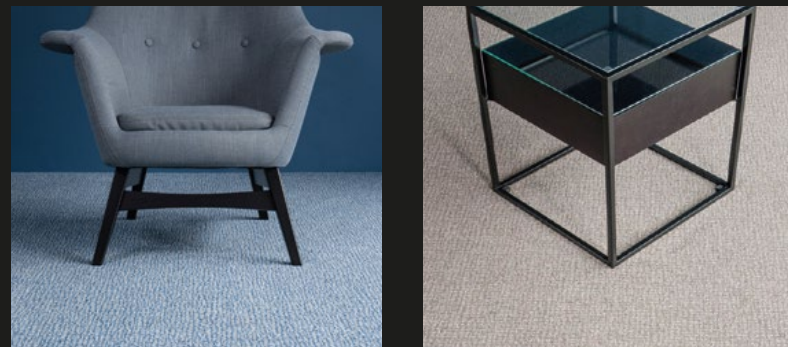
**danfloor**  
An Ulster Group Company



# EQUINOX™

## EVOLVE

Equinox Evolve is an elegant addition to the Equinox Collection. Manufactured using innovative tufting technology Evolve offers a delicate pattern and a high tuft density giving the range presence and durability. The new subtle design and available colour bank allows Equinox Evolve to sit comfortably alongside the Tones range; enabling the creation of stunning and coordinated interior design schemes.



### The finest carpet yarn

Carpet fibre determines the integrity of your carpet and influences many aspects such as surface structure, colour fastness, resilience to wear and effectiveness in soil and stain resistance.

Danfloor's Prism™ fibre has a unique cross section which means the fibre is able to refract light; creating a carpet which can deliver purity in colour and defuse any visual soiling.

Prism™ is ideal for use within the healthcare and commercial markets and is a firm choice when selecting carpets for environments that are subject to regular soiling and commercial cleaning.

Key features of Prism™ include:

- Stain and soil resistance
- Inherently anti-static
- Resilience to wear
- Enhanced texture and colour
- Solution dyed yarn
- Colour fastness

A subtle yet contemporary patterned design

## BREEAM®

### Setting the standards for sustainable design

The Equinox Collection has full BRE certification providing you with Cradle to Grave Eco-point scores and Green Guide Ratings.

The BRE Environmental Assessment Method is the leading and most widely used environmental assessment method for buildings. It sets the standard for best practice in sustainable design and has become the de facto measure used to describe a building's environmental performance. Certification gives you confidence that products and services will perform as expected. It ensures that they meet - and continue to meet - appropriate standards, through a combination of regular company audits and a schedule of ongoing tests. Our Equinox range has received certified Green Guide ratings ranging from A to A+ dependent upon application.

Our Green Guide ratings reflect how carefully we monitor the environmental impact of our products and provides independent verification of the work we have undertaken to enhance the environmental credentials of our products.

## mædical™ i-LINK

### Advanced Antimicrobial Technology

mædical™ i-Link is an antimicrobial treatment applied to a number of our healthcare carpets. mædical™ i-Link has been tested by L'Institut Pasteur de Lille and is a revolutionary technology which provides a permanent barrier against microbes.

mædical™ i-Link is a non-leaching, permanent coating on the carpet fibres. The nano-coating is specially designed to deactivate microorganisms when they come into contact with the carpet fibres by physically stabbing the membrane of the microbe and electrocuting the biochemicals within it.

mædical™ i-Link is important for anyone needing to either reduce odours or increase health protection. It is ideal for sectors where carpeting is used near or around food and drink, such as in the healthcare, education and hospitality sectors. mædical™ i-Link remains functional even when subject to an intense cleaning and maintenance schedule.

The benefits of mædical™ i-Link technology includes:

- Stops the growth of bacteria that causes MRSA and fungal growth which are the major causes of most fabric odour problems
- is not harmful to humans or the environment
- reduces the smells created by yeast, fungus and bacteria in carpet
- reduces the risk of cross contamination
- contains no arsenic, heavy metals, or polychlorinated phenols.

For further information on the benefits of the mædical™ i-Link technology, please visit [www.danfloor.co.uk/features/antimicrobial/](http://www.danfloor.co.uk/features/antimicrobial/)

## EQUINOX EVOLVE



3611 034 Shadow

LRV: 13.00

## EQUINOX TONES



3850 073 Autumn Dusk

LRV: 10.25



3850 277 Anvil

LRV: 8.93



EQUINOX EVOLVE



3611 030 Sweetwood

LRV: 16.49



3611 032 Taupe

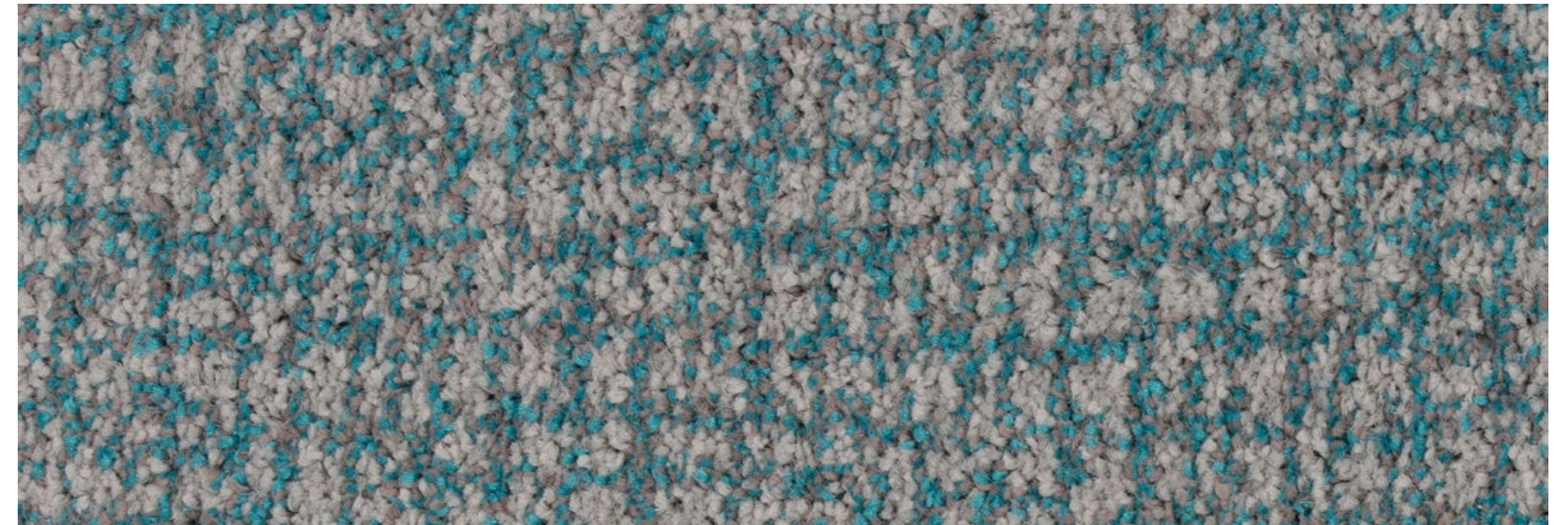
LRV: 12.09



3611 035 Hazel

LRV: 11.79

EQUINOX EVOLVE



3611 047 Aqua Green

LRV: 15.22



3611 066 Mediterranean

LRV: 13.71

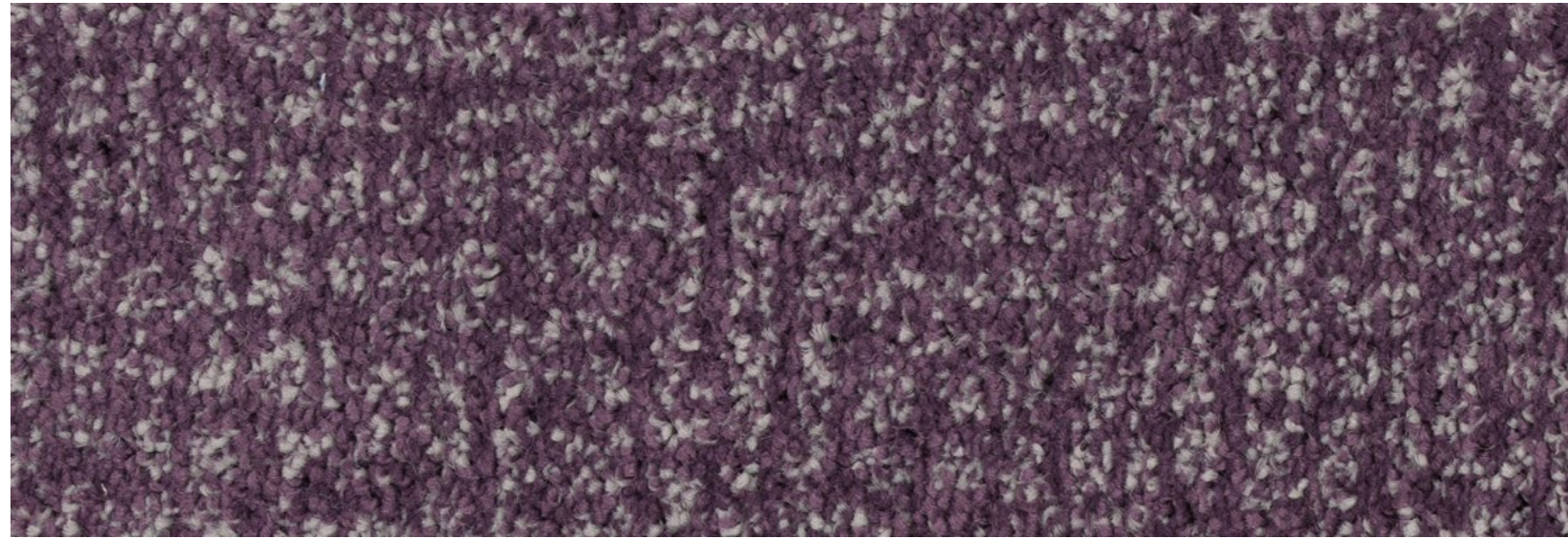


3611 045 Mustard Grey

LRV: 19.63



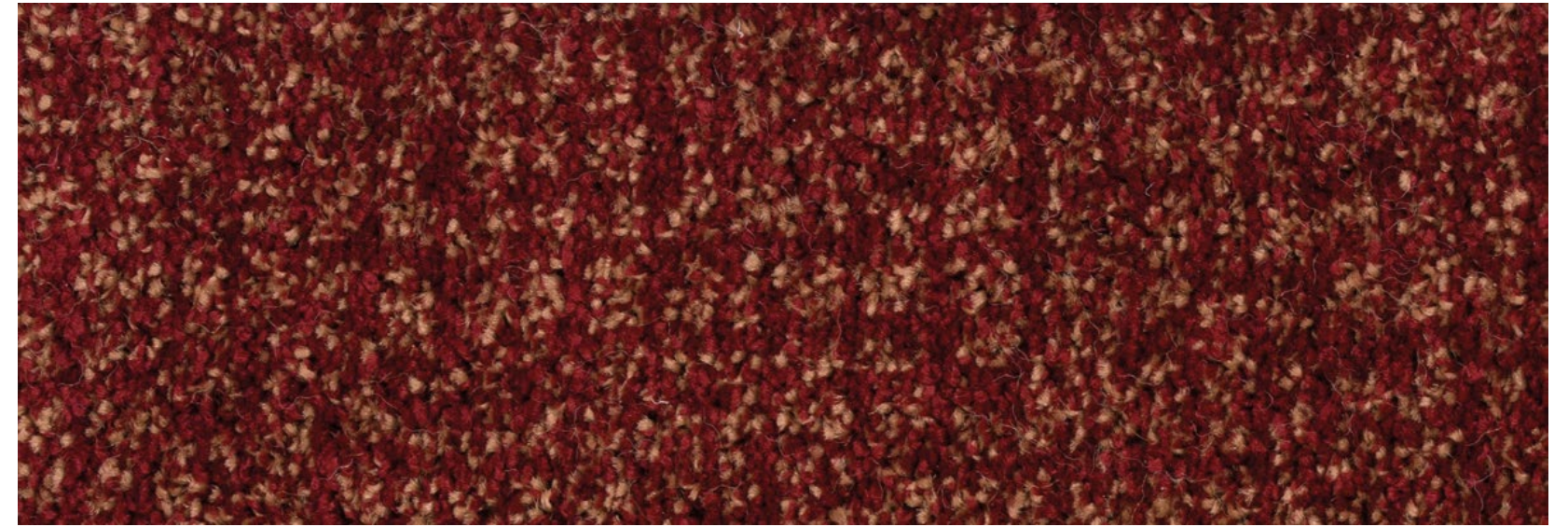
EQUINOX EVOLVE



3611 098 Purple Orchid

LRV: 8.92

EQUINOX EVOLVE



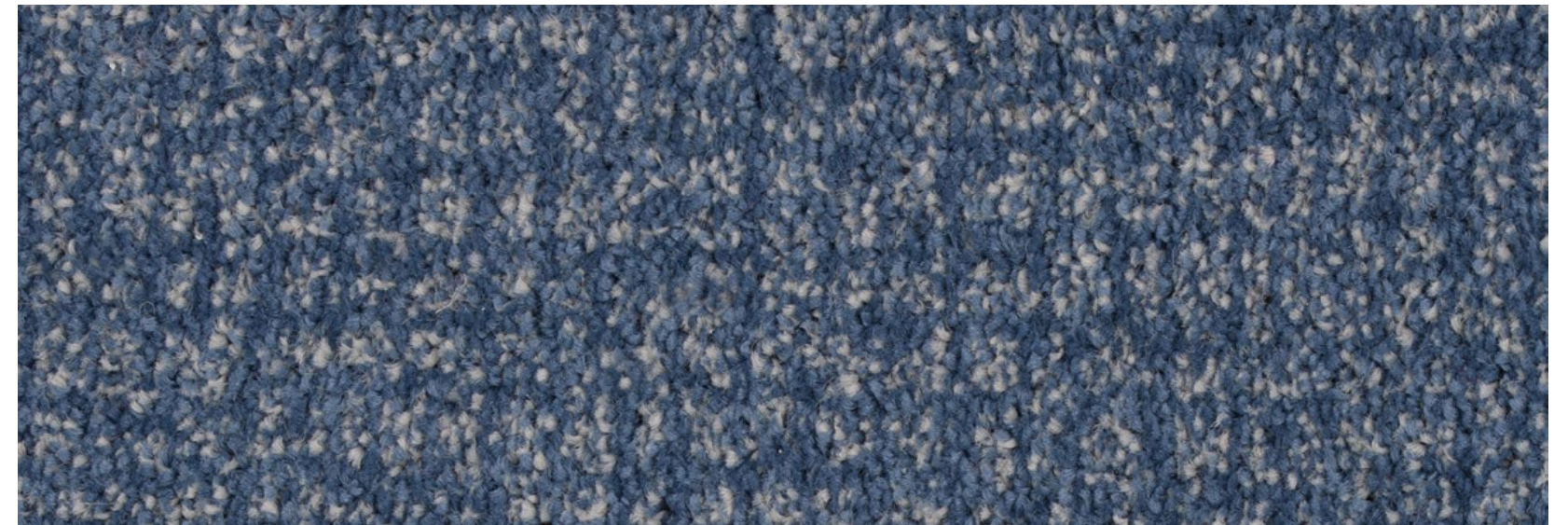
3611 090 Rowan

LRV: 5.01



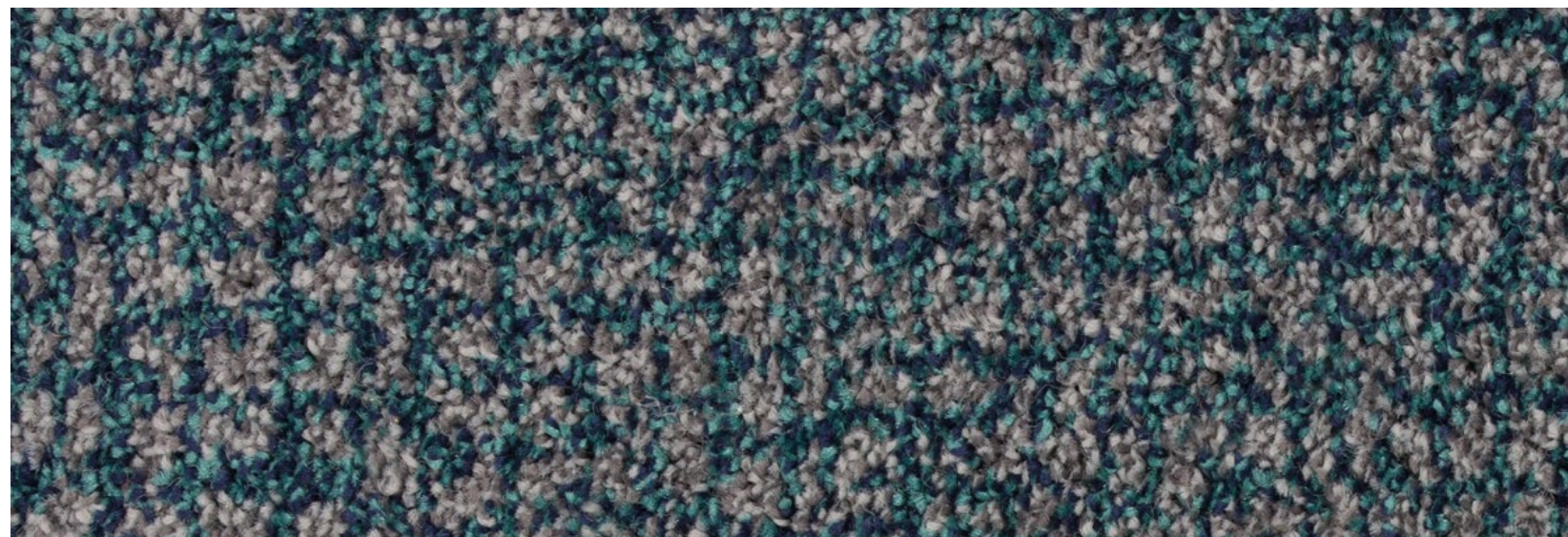
3611 079 Slate

LRV: 8.07



3611 082 Maritime

LRV: 9.81



3611 064 Teal

LRV: 8.66



3611 061 Beach Meadow

LRV: 12.68



TECHNICAL SPECIFICATION	EQUINOX™ EVOLVE	STANDARD
<b>Design Pattern Identification</b>	3611	
<b>Method of Manufacture</b>	Tufted Cut Pile	
<b>Gauge</b>	1/8" Gauge	
<b>Measures</b>	Rolls, approx. 400cm wide	
<b>Surface</b>	Cut Pile Heat Set	
<b>Colouration</b>	Solution Dyed	
<b>Pile Material</b>	Prism Fibre	
<b>Primary Backing</b>	Woven Polypropylene	
<b>Total Weight</b>	approx. 3400 g/m <sup>2</sup>	
<b>Pile Weight</b>	approx. 1300 g/m <sup>2</sup>	
<b>Total Height</b>	approx. 10 mm	
<b>Pile Height</b>	approx. 5.00 mm	
<b>Tuft Density</b>	approx. 166,500 Mt Sq	
<b>Backing</b>	Aqua Bac Impervious	
<b>PERFORMANCE TEST</b>		
<b>Flammability / Hot Nut Test</b>	Low Radius of Char - Pass	BS 4790
<b>Burning Classification</b>	Efl	EN 13501-1
<b>Electrostatic Properties</b>	1.5 kv @ 25% RH	BS ISO 6356
<b>Thermal Resistance</b>	1.51 Tog	BS 4745 (ISO 8302)
<b>Reduction of Transmitted Impact Noise</b>	28dB	BS EN ISO 140-8
<b>Acoustics</b> - Measurement of sound absorption in a reverberation room	Classification D	BS EN ISO 354:2003
<b>Colour Fastness</b>		
Light (1-8) Scale	Min 5	
<b>Rub Fastness</b>		
Water (1-5) Scale	Min 5	
Shampoo (1-5) scale	Min 5	
Resistance to Abrasion (1-5) Scales	Min 5	
<b>Luxury Rating</b>	LC4	EN ISO 1307

## Colour Selection

Although the Equinox range is designed to minimise visual soiling, it is strongly recommended that care be taken in choosing colours to suit particular locations. Medium to dark coloured carpets disguise soiling more effectively than plain, light shades and should therefore be considered for high traffic areas such as corridors.

## Tolerances

Product specifications are derived from averages in yarn, fibre, temperature and colour which may vary within the standard industry tolerances. Performance is not affected by such variations.

## Pressure Markings

Pressure marks result during the manufacturing of large rolls of carpet. These faint lines can also be a result of rolls resting in racks where they are subjected to considerable pressure. As a result unavoidable pressure lines are often visible when the carpet is first unrolled, but should not cause any concern. The lines will not affect performance and will disappear within a few weeks of normal use. Thorough and regular vacuuming can also assist with removing the lines.

## Care & Maintenance

Carpet should be cleaned daily with a vacuum cleaner, preferably one with a beater action. Spillages should be taken up promptly and surface stains removed by an appropriate method as soon as possible. Instructions for the maintenance of carpets are available from danfloor upon request or can be downloaded from [www.danfloor.co.uk](http://www.danfloor.co.uk). It is recommended that a maintenance schedule be initiated from the date of installation to achieve maximum life expectancy of the product. Chair pads are required under roller castor chairs to prevent accelerated wear and to preserve appearance retention.

## Aqua Bac Impervious

Manufactured to conform to the latest standards in impermeability, Aqua Bac impervious by danfloor guarantees the customer protection against sub-floor contamination. Situated beneath the carpet substrate and above the latex foam backing the impervious membrane has been designed to allow sub-floor moisture evaporation via the latex foam backing whilst preventing surface liquid penetration.

Suitable for use with under floor heating systems the Aqua Bac backing acts as a non thermal insulator, reduces sound impact levels and provides a cost effective built in cushioned underlay.

## Installation

Prior to cutting and installation all carpets should be unrolled and inspected to ensure all quality standards have been met. When installing impervious backed carpets we recommend that joins should be kept to a minimum and that no joins should be placed within the main body of a room or any location that could undermine the integrity or functionality of an impervious backed carpet. Prior to installation approval should be sought with the client as to the location of all joins. Installation must be carried out by an approved carpet installer in accordance to BS5325:2001. A full Installation Guide, including recommended adhesives, can be downloaded from [www.danfloor.co.uk](http://www.danfloor.co.uk)



**danfloor**  
An Ulster Group Company

Innovative Carpet Solutions

**danfloor Uk Ltd**  
106 Longmead Road, Emerald Park, Emersons Green  
Bristol BS16 7FG, United Kingdom  
T: 0333 014 3132, F: 0333 014 3134  
E: [info@danfloor.co.uk](mailto:info@danfloor.co.uk)

**Danfloor Denmark**  
danfloor a/s, Østerbro 9, DK-6933 Kibæk  
T: +45 9699 1900, F: +45 9699 1999

[www.danfloor.co.uk](http://www.danfloor.co.uk)