

# Durable Comfort Performance

**danfloor**  
An Ulster Group Company

10 Year Limited Wear Warranty

Soil and Stain Resistant

Castor Chair Warranted

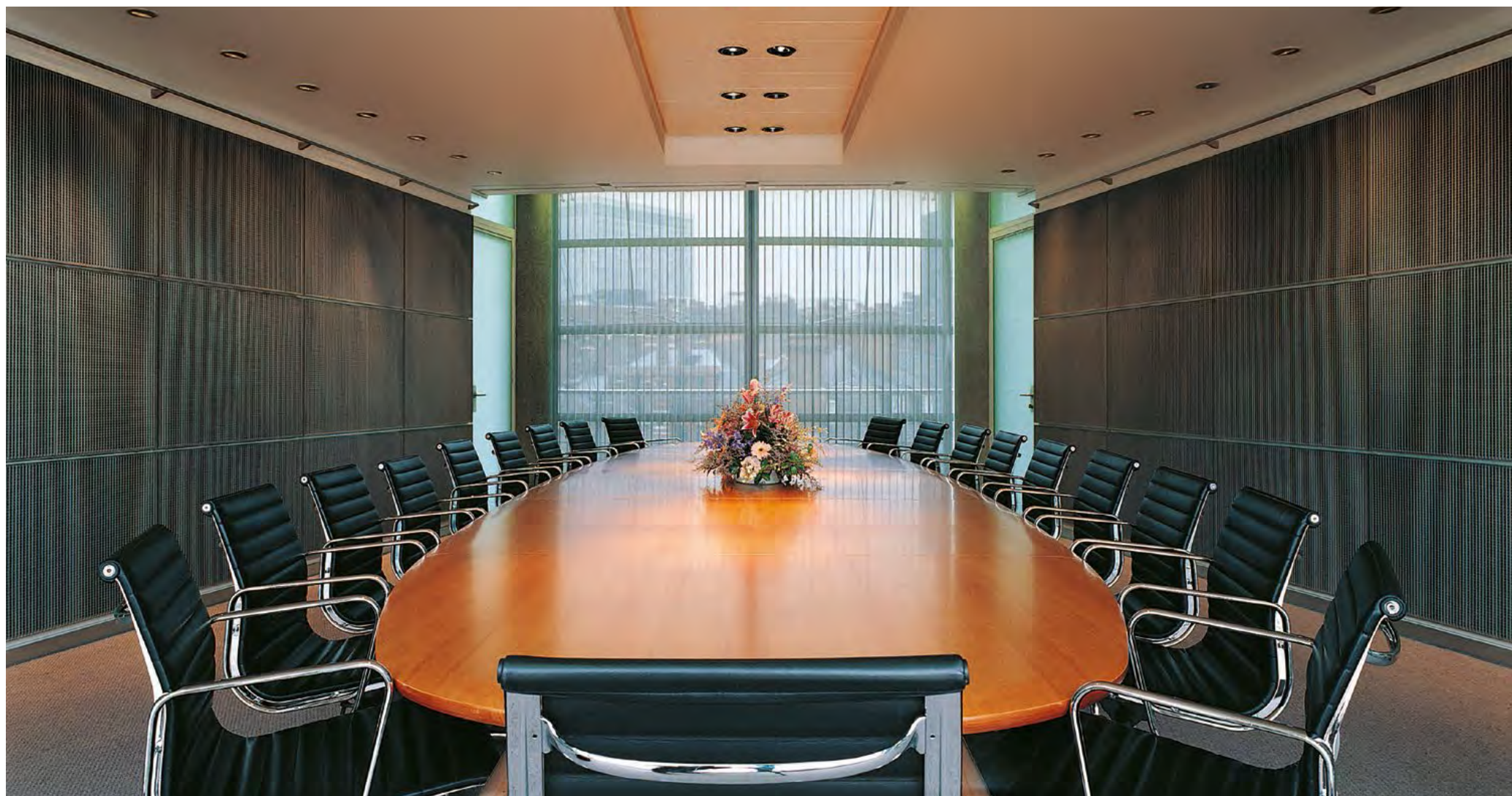
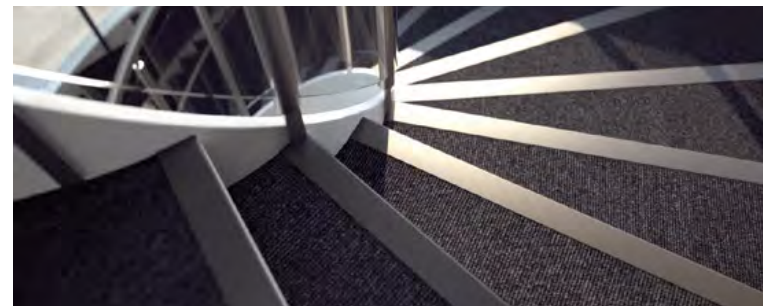
Heavy Contract

Innovative Colours

Anti static

A range of carpets for the healthcare, commercial, education and retail sectors.

**ETON** CONTRACT







Manufactured from the Antron Legacy fibre the ETON range offers heavy wear characteristics, proven performance, anti-static properties and durability. Available in eighteen contemporary colours and two backing types Eton provides extra comfort, thermal insulation and sound absorption making the range ideal for the commercial, education and retail sectors.



## It's all about the fibre

Fibre influences many aspects of a carpet's appearance and performance. The Antron fibre has been tried and trusted for over 40 years and offers a great deal of flooring possibilities in the commercial interiors sector.

Eton is manufactured with Antron's polyamide 6.6. This nylon yarn has a significant number of hydrogen bonds and an optimum molecular chain alignment meaning its performance and appearance retention far exceeds those carpets made with a polyamide 6 yarn.

## Low soiling

The Antron 6.6 fibre features a hollow filament fibre shape that helps hide soiling. The internal voids refract and diffuse light enhancing soil hiding

capability. Also the smaller surface area of the hollow filament fibre minimises soil accumulation, making the carpet easier to clean.

## Wear resistance and good appearance retention

Carpets made with the 6.6 nylon have strong hydrogen bonds which require greater heat or mechanical energy to break them. As a result the carpet also has better texture retention, resistance to matting and crushing and greater resilience and recovery after pressure.

## Heat resistance

The class of reaction to fire performance Bfl and Cfl according to EN 13501-1 are the highest possible categories for textile floor coverings. These classifications are achieved easily with Antron carpet fibre.

## Antistatic

Antron carpet fibre contains fine, conductive polyamide fibres that protect against electrostatic charges throughout the life of the carpet.





COMMERCIAL

HEALTHCARE

EDUCATION

Care in Business

Environmental/Recycling

Quality Control

Innovative

Colour

Texture

Trend

Static Protection

Soiling & Stain Resistant

Colour/Light - Fastness

Custom

Thermal Insulation

Sound Absorption

Noise Control

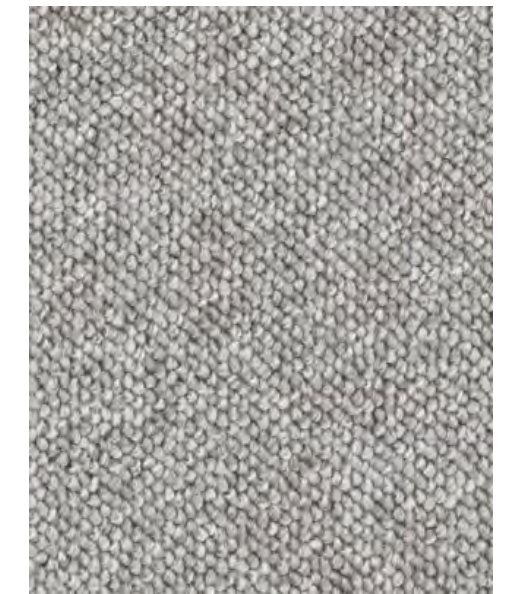
Performance Warranted



3198 070



3198 020



3198 071



3198 030



3198 022



3198 074



3198 077



3198 050



3198 079



3199 030

ETON RIB



ETON BASIC



3198 072



3198 080



3198 060



3198 073



3198 082



3198 090



3198 076



3198 084



3198 097

danfloor

COMMERCIAL

HEALTHCARE

EDUCATION

Care in Business

Environmental/Recycling

Quality Control

Innovative

Colour

Texture

Trend

Static Protection

Soiling & Stain Resistant

Colour/Light - Fastness

Custom

Thermal Insulation

Sound Absorption

Noise Control

Performance Warranted



3199 020



3199 030



3199 077

ETON RIB



3199 071



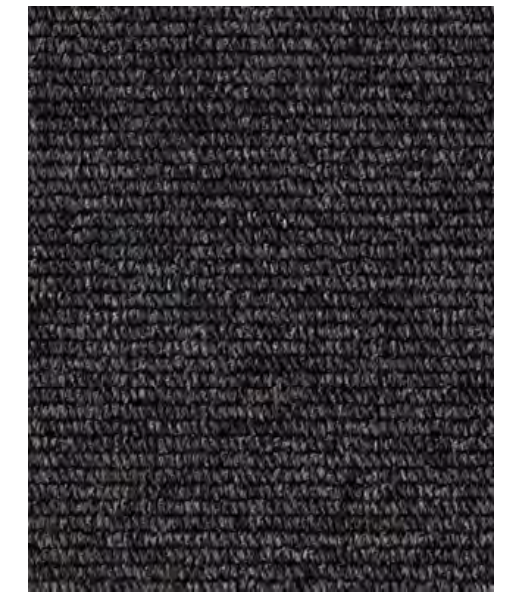
3199 073



3199 074



3199 084



3199 076



3199 079



# SPECIFICATIONS



TECHNICAL SPECIFICATION	ETON BASIC	ETON RIB	STANDARD
<b>Design Pattern Identification</b>	3198	3199	
<b>Method of Manufacture</b>	Tufted Loop Pile	Tufted Loop Pile	DIN ISO 2424
<b>Gauge</b>	5/32" Gauge	5/32" Gauge	DIN ISO 2424
<b>Measures</b>	Rolls, approx. 400cm wide	Roll, approx. 400cm wide	DIN 3018
<b>Surface</b>	Loop Pile	Loop Pile	DIN ISO 2424
<b>Colouration</b>	Multi coloured	Multi coloured	DIN ISO 2424
<b>Pile Material</b>	100% Polyamide - Invista Antron Legacy 6.6	100% Polyamide - Invista Antron Legacy 6.6	Dir. 71/307/CEE mod
<b>Primary Backing</b>	Synthetic	Synthetic	DIN ISO 2424
<b>Backing</b>	Latex KT / Textile TD Bac	Latex KT / Textile TD Bac	DIN ISO 2424
<b>Total Weight</b>	KT Bac approx 2650 g/m <sup>2</sup> TD Bac approx 2100 g/m <sup>2</sup>	KT Bac approx 2750 g/m <sup>2</sup> TD Bac approx 2200 g/m <sup>2</sup>	ISO 8543
<b>Pile Weight</b>	approx. 620 g/m <sup>2</sup>	approx. 700 g/m <sup>2</sup>	DIN ISO 2424
<b>Total Height</b>	approx. 6.00 mm	approx. 6.00 mm	ISO 8543
<b>Pile Height</b>	approx. 4.00 mm	approx. 4.00 mm	ISO 1766
<b>Number of Tufts</b>	approx. 95,000 Mt Sq	approx. 114,000 Mt Sq	ISO 1763
<b>FUNCTIONAL PROPERTIES</b>			
<b>Wear Classification</b>	Commercial-normal Class 33	Commercial-normal Class 33	EN 1307
<b>PHYSICAL PROPERTIES</b>			
<b>Surface Resistance</b>	approx. ≤10/9 Ohm	approx. ≤10/9 Ohm	ISO 10965
<b>Earthing properties*</b>	approx. ≤10/9 Ohm	approx. ≤10/9 Ohm	DIN IEC 1340-4-1
<b>Sound Impact</b>	approx. 25dB	approx. 25dB	ISO 140-8
<b>Burning Classification</b>	Cfl-s1	Cfl-s1	DIN EN 13501-1
<b>Light Fastness</b>	Min 5	Min 5	ISO 105-B02
<b>Water Fastness</b>	Min 4	Min 4	EN ISO 105 E01
<b>Resistance to Abrasion</b>	Min 3	Min 3	EN ISO 105 X12

## Colour Selection

Although the Eton range is designed to minimise visual soiling, it is strongly recommended that care be taken in choosing colours to suit particular locations. Medium to dark coloured carpets disguise soiling more effectively than plain, light shades and should therefore be considered for high traffic areas such as corridors.

## Tolerances

Product specifications are derived from averages in yarn, fibre, temperature and colour which may vary within the standard industry tolerances. Performance is not affected by such variations.

## Care & Maintenance

Carpet should be cleaned daily with a vacuum cleaner, preferably one with a beater action. Spillages should be taken up promptly and surface stains removed by an appropriate method as soon as possible. Instructions for the maintenance of carpets are available from danfloor upon request or can be downloaded from [www.danfloor.co.uk](http://www.danfloor.co.uk). It is recommended that a maintenance schedule be initiated from the date of installation to achieve maximum life expectancy of the product. Chair pads are required under roller castor chairs to prevent accelerated wear and to preserve appearance retention. Please note that loop pile carpets may be damaged if not adequately protected from sharp objects.

## Installation

Prior to cutting and installation all carpets should be unrolled and inspected to ensure all quality standards have been met. Approval should be sought with the client as to the location of all joins. Installation must be carried out by an approved carpet installer in accordance to BS5325:2001. A full Installation Guide, including recommended adhesives, can be downloaded from [www.danfloor.co.uk](http://www.danfloor.co.uk)



antron. 

**danfloor**  
An Ulster Group Company

Innovative Carpet Solutions

**danfloor Uk Ltd**  
106 Longmead Road, Emerald Park, Emersons Green  
Bristol BS16 7FG, United Kingdom  
T: 0333 014 3132, F: 0333 014 3134  
E: [info@danfloor.co.uk](mailto:info@danfloor.co.uk)

**Danfloor Denmark**  
danfloor a/s, Østerbro 9, DK-6933 Kibæk  
T: +45 9699 1900, F: +45 9699 1999

[www.danfloor.co.uk](http://www.danfloor.co.uk)