

EQUINOX™

Innovative Carpet Solutions

danfloor
An Ulster Group Company

EQUINOX™ COLLECTION

SUPERIOR
PERFORMANCE
AND DESIGN

An award winning range of carpets which
are subtle in design and vibrant in colour.

— EQUINOX



www.danfloor.co.uk

DESIGNED BY **danfloor**

Danfloor's manufacturing history is underpinned by continued research and development. This enables us to deliver carpets that not only achieve the highest standards in performance, but more importantly for you the customer includes advancement in yarn and manufacturing technologies, resulting in a superior flooring finish.

As a manufacturer we control every process from raw material selection, production planning, quality control, delivery and service. We ensure our carpets meet exacting standards, enabling the delivery of fit for purpose flooring solutions.

Carpets are manufactured in our Danish tufting plant then backed in one of Europe's most technically advanced backing facilities before being shipped into our UK distribution and warehousing facility.

Our Area Representatives cover the whole of the UK and can offer technical advice on all aspects of application and installation. They are supported by our sales and logistical support team who are based in the UK Distribution Centre in Bristol.



MANUFACTURING QUALITY CARPETS

Having control over the whole manufacturing process from tufting to backing means we can carefully monitor the quality of our products and their environmental impact.

DESIGNED FOR DEMANDING ENVIRONMENTS

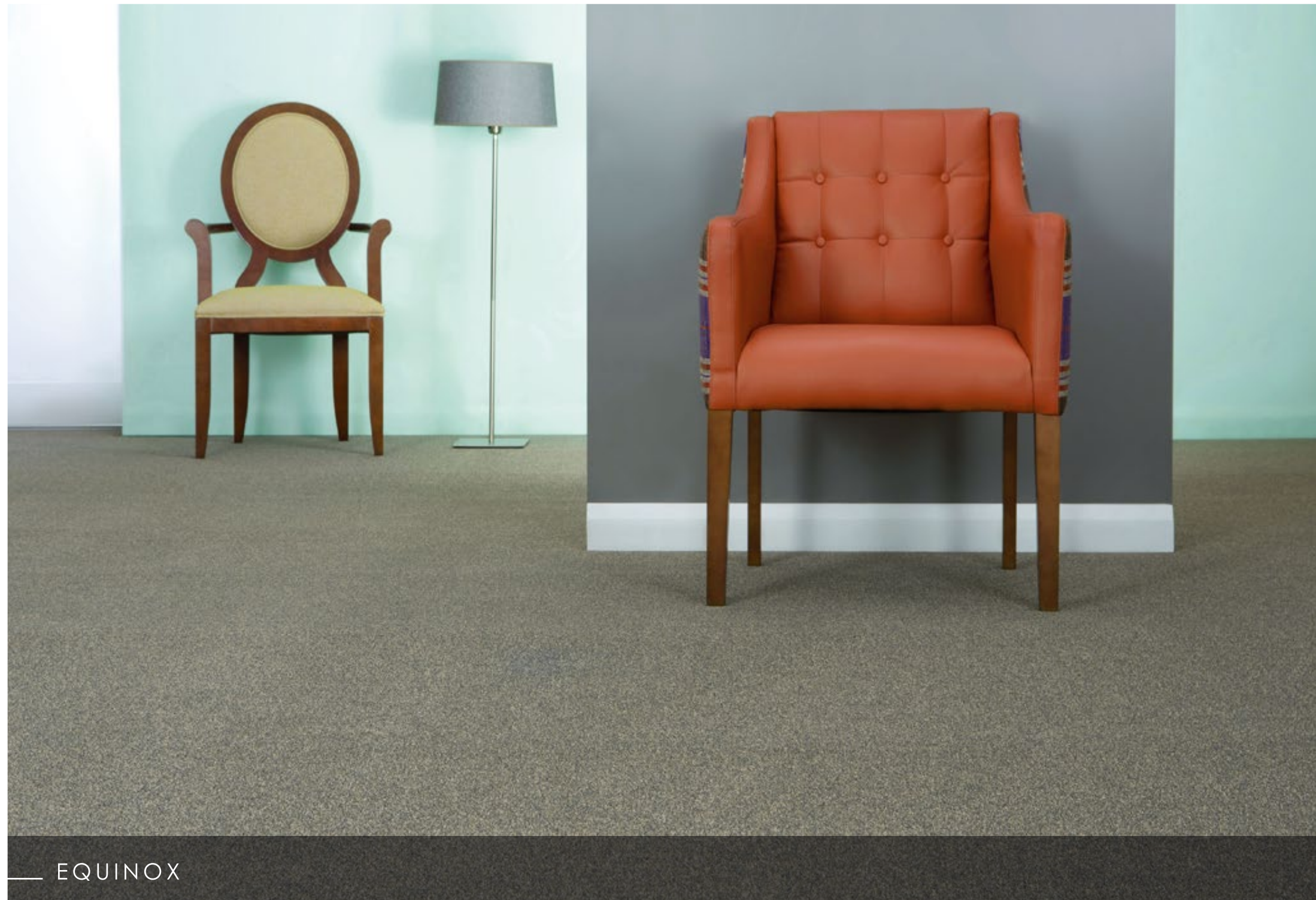
Healthcare, Education, Early Years Child Care, Commercial and Leisure environments are busy places that experience high levels of traffic and require intense commercial cleaning both of which can take their toll on any flooring finish.

The Equinox Collection is specially designed to withstand the pressures of these demanding environments; the collection combines a number of innovative performance features that make the range especially suited to these sectors, delivering long lasting superior performance.

EQUINOX



www.danfloor.co.uk



PERFORMANCE GUARANTEED

In addition to its modern design and vibrant colours the Equinox Collection includes some impressive performance features making it a flooring solution that is not only aesthetically pleasing but one that offers a number of practical and functional benefits.

STRONG AND RESILIENT

Carpet for any location – The Equinox Collection comes in a range of pile weights providing you with options when it comes to all locations from high traffic areas to bedrooms.

Colour fast – Manufactured using solution dyed yarn, the locked in colourfast system ensures superior colour and light fastness, even when subject to harsh cleaning chemicals.

Designed to last – The Equinox Collection is accompanied by a 10 year wear and performance warranty offering real life cost benefits over its intended life cycle.

EASY CARE

Soil Resistant – The unique cross section of the yarn reduces soil adhesion and prevents dirt from becoming embedded within the carpet fibres, making soil removal easier and less visible.

Stain Resistant – The solution dyed fibre repels acid stains, minimising their chemical adhesion, keeping your investment looking good for longer.

SPILL SAFE

The Equinox Collection has an integral protective impervious membrane preventing liquid spills penetrating through to the sub floor, reducing contamination, fungal growth and unpleasant odours.

THERAPEUTIC AND SAFE ENVIRONMENTS

Along with offering functionality and practicality, floor finishes should also help to improve your indoor environment. The installation of carpets can improve the health and wellbeing of individuals living within care settings by providing comfort, reducing stress and improving air quality.

PEACE AND QUIET

Within healthcare facilities, corridors and communal areas can be very busy places at all times of day and night. The presence of carpet in such areas helps to absorb unwanted noise and reduce sound reverberation times. This not only helps to create a calm and peaceful living environment but is also very important for people with difficulty hearing and for those living with dementia as it makes it easier for the residents to filter out unwanted noise which ultimately reduces stress and confusion.

INDOOR AIR QUALITY

The quality of the indoor air we breathe has a strong influence on our health and wellbeing and should be a key consideration in the care sector, especially if you have residents living with breathing difficulties such as asthma.

Fine dust can present a significant health hazard for allergy sufferers as particles may cause irritation when they are breathed in and enter the respiratory tract. Many studies suggest that carpet retains dust particles, unlike hard surfaces where they regularly become air borne. If carpets are regularly vacuumed these particles, and any allergens that are bound within the carpet fibres, are removed from the room without causing discomfort.

WARMTH AND COMFORT UNDERFOOT

Carpet adds a warm and welcoming feel to any room and provides a soft cushioned layer for extra underfoot comfort. Acting as a thermal insulator, carpets improve energy consumption and have low heat conduction. It is estimated that up to 30 days of heating can be saved by installing carpets, resulting in a 4-6% energy saving and a consequent reduction in energy costs.



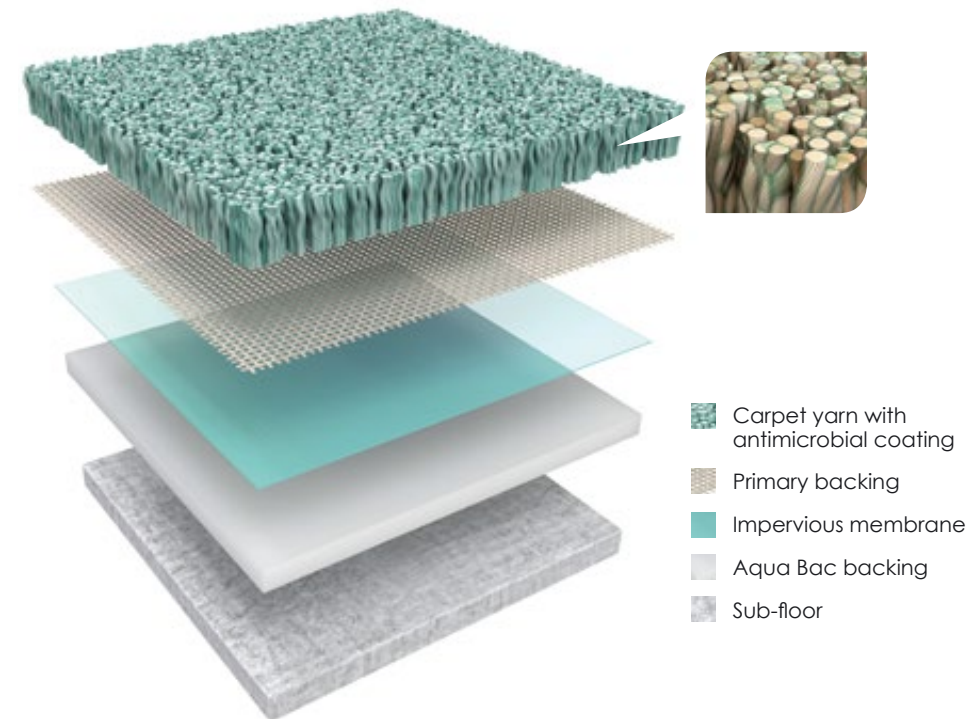
Carpets help to create that home from home feeling and enable care settings to move away from an institutional look and feel.

INNOVATIVE IMPERVIOUS MEMBRANE

Manufactured to conform to the latest standards in impermeability, danfloor's Aqua Bac Backing and impervious membrane protects against sub floor contamination.

Situated beneath the carpet substrate and above the latex foam backing the impervious membrane has been designed to stop surface liquid penetration and prevent sub-floor contamination.

The Equinox Collection's Aqua Bac Backing is ideal for environments where clean-ability is an important factor. With conventional carpets, if liquid is spilt it will typically seep through to the floor below which can cause bacterial and fungal growth and potentially lead to odours and corrosion of the carpet backing or flooring. Danfloor's Aqua Bac Backing prevents liquid spills passing through the carpet, making spillages quick and easy to remove. In addition it allows for various wet cleaning methods to take place permitting a regular cleaning and maintenance schedule, helping to pro-long the life of the carpet.



TREAD SAFELY

Creating safe and healthy environments is an important consideration when selecting a floor covering. The Equinox Collection complies with strict European safety standards, demonstrated by our CE marking, and includes enhanced health protection through its application of advanced antimicrobial technology.

ANTI-BACTERIAL PROTECTION


The Equinox Collection is permanently coated with our medical i-Link antimicrobial treatment, this integral protection applied to the carpet fibres works to deactivate harmful microorganisms and bacteria including those that cause MRSA. The treatment inhibits the growth of bacteria, fungus and mould which can contribute to unpleasant carpet odours. It is a revolutionary technology that guarantees optimum freshness and hygiene for textiles, even after intensive use and frequent commercial cleaning.

FALL FRIENDLY

Slips and falls are far less likely to occur on carpeted areas compared with hard floor coverings. When they do occur the impact is dramatically lessened due to a softer landing, helping to reduce the severity of injuries. The soft fibres of a carpet also help to decrease stress on joints, providing excellent orthopaedic properties. It has also been proven that gait speed and step length is greater in older people walking on carpeted areas than when walking on vinyl.

The Equinox Collection has been designed to facilitate and withstand impact from walking aids and with a regular cleaning and maintenance schedule the carpets will not lose their appearance over time.





The ability to make surfaces and carpet resistant to microbial contamination has advantages and values in many applications and market segments where carpeting is used.

— EQUINOX

ADVANCED ANTIMICROBIAL PROTECTION

mædicalTM
i-LINK

A healthy working and living environment is an important factor to consider when planning the design of a new project or refurbishment. Realising the importance of healthy, hygienic environments, the Equinox Collection has been developed to include mædical i-Links innovative anti-microbial treatment. mædical i-Link is designed to kill harmful bacteria including those that can cause MRSA and E-coli.

Microorganisms are part of our everyday lives and include many diverse organisms. They include bacteria, fungi, yeast and algae that are found wherever moisture, temperature and food sources are present. Some of these organisms are a natural part of our environment. Others can cause serious problems including deterioration, defacement, rotting, surface degradation, staining and health problems ranging from simple discomfort to physical irritation, allergic sensitisation, toxic response and infection.

mædical i-Link works by attracting microorganisms to the carpet fibres, once contact is made the cell membrane of the microorganisms are punctured, thereby deactivating the organisms.

BENEFITS OF MÆDICAL I-LINK ANTIBACTERIAL TREATMENT

- Stops bacterial and fungal growth which are the major causes of most fabric odour problems
- Reduces the risk of cross contamination
- Controls or eliminates microbial staining and deterioration
- Contains no heavy metal or polychlorinated phenols
- Will not leach into the environment or transfer to other articles
- Maintains carpet freshness
- Durable for the life of the carpet

mædical i-Link is important for all environments where there is a desire to either reduce odour or increase health protection. It is ideal for all sectors where consumers value a healthier indoor environment with increased protection from cross infection and sick building syndrome.

www.danfloor.co.uk

DESIGNING FOR DEMENTIA

Dementia friendly design can make a real difference in improving the quality of life for thousands of residents in care settings living with dementia. At danfloor we keep abreast of the recommendations when it comes to colour and design and have created a selection of carpets suitable for use within healthcare facilities accommodating those who live with dementia.

THE UNIVERSITY OF STIRLING STATES WHEREVER POSSIBLE CARPET SHOULD BE USED WITHIN A CARE HOME

Choosing the right flooring solution is essential when designing for dementia and selecting the right colour is even more important. Light Reflectance Value (LRV), is a measure of the percentage of visible and usable light that is reflected from a surface when illuminated by a light source. Certain surfaces and features are required to contrast visually within their surroundings to aid navigation and by equating colour with an LRV makes this achievable. Current guidance and Code of Practice BS8300:2009 states that adequate visual contrast is provided if the LRV of the contrasting areas differ by at least 30 points.

Healthcare facilities, especially care homes are trying to move away from an institutional look and feel with the aim of creating a more homely atmosphere, it is therefore essential to have carpet wherever possible. The Equinox Collection provides a subtle colour bank which aids designers with specifying various room scenes and creating a domestic environment. In addition to colour the texture of carpet within care facilities is important and should be flat to allow for shuffling and the use of walking aids, wheelchairs and trolleys.

Our Equinox Tones range has been approved for use within dementia care settings due to its subtle design which is not too distracting to the eye. All Light Reflectance Values for the Equinox Collection can be found at www.danfloor.co.uk.



THE FINEST CARPET YARN



Prism™ has a proven history within the healthcare and leisure markets and is undoubtedly a firm choice when selecting carpets for environments that are subject to regular soiling and commercial cleaning.

EQUINOX



All the carpets within our Equinox Collection are manufactured with our Prism™ fibre. Incorporating a unique cross section the Prism™ fibre delivers a carpet with vivid colouring and light refraction properties which helps to defuse visual soiling. Other key features of the fibre include:

STAIN AND SOIL RESISTANCE

The cross section results in a rigid fibre which blocks soil particles from sticking to the surface of the carpet therefore reducing soil adherence and assisting with the removal of dirt particles when the carpet is vacuumed.

INHERENTLY ANTI-STATIC FIBRE

The Prism™ fibre naturally prevents electrical charges that can sometimes be produced when in contact with certain textiles.

SOLUTION DYED FIBRE

Prism™ is solution dyed which means that the colouring is added to the fibre when it is formed producing a carpet with outstanding texture and colour and one that can withstand commercial cleaning agents, like bleach, without the loss of colour.



EQUINOX™ COLLECTION

As a specialist manufacturer and supplier to the healthcare market danfloor ensures that the carpets within the Equinox Collection have unique design features and performance characteristics to withstand the demands of the care sector.

There are common colour themes running through the four ranges; Equinox, Tones, Stripe and Evolve, allowing the ranges to be used in combination with one another. We also work alongside industry designers and colourists to constantly ensure the colours of the Equinox Collection coordinate with the latest textiles and fabrics to bring together a complete interior design scheme.

The Equinox Collection has full BRE certification providing you with Cradle to Grave Eco-point scores and Green Guide Ratings.

www.danfloor.co.uk

EQUINOX™ EVOLVE

The Equinox Evolve offers versatility and performance combined with an elegant new design.

Manufactured using innovative tufting technology Evolve offers a delicate pattern and a high tuft density giving the range presence and durability.

The available colour palette allows Equinox Evolve to be specified alongside the Tones range; enabling the creation of stunning and coordinated interior design schemes.

Made with our Prism fibre, which refracts light and defuses any visual signs of soiling, Evolve also incorporates all our usual performance features, such as an impervious membrane and anti-microbial yarn treatment, making it suitable for a number of environments from healthcare to hospitality.

Colour in the picture is Mediterranean LRV: 13.71

EQUINOX



Sweetwood LRV: 16.49



Hazel LRV: 11.79



Taupe LRV: 12.09



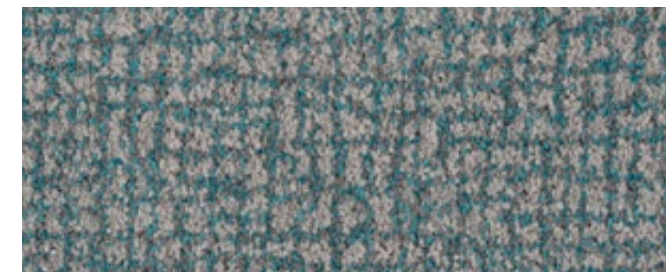
Beach Meadow LRV: 12.68



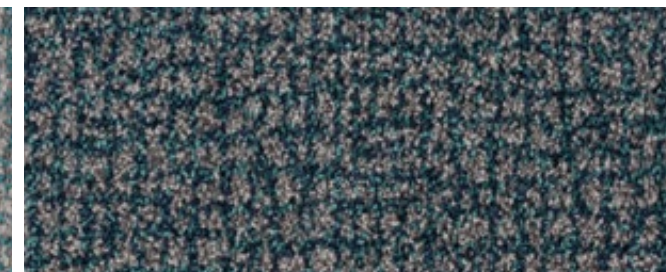
Mustard Grey LRV: 19.63



Shadow LRV: 13.00



Aqua Green LRV: 15.22



Teal LRV: 8.66



Maritime LRV: 9.81



Purple Orchid LRV: 8.92



Rowan LRV: 5.01



Slate LRV: 8.07



— EQUINOX

| EQUINOX™ |

The Equinox range offers a modern carpet that is subtle in design and vibrant in colour.

Equinox is a cut pile, solution dyed carpet that offers exceptional performance, superior styling and a comprehensive warranty, making it a must for any healthcare or commercial interior.

The Equinox Collection also includes mædical i-Link our antimicrobial yarn treatment which kills the microorganisms when they come into contact with the fibre. mædical i-Link doesn't lose strength over time and creates an environment which microorganisms can't adapt to.

The Equinox range is available in a pile weight of 1050 grams allowing this flooring collection to be used in a variety of applications from high traffic areas like corridors and circulation areas to bedrooms.

Equinox is available in danfloor's innovative Aqua bac impervious backing which not only provides a line of defence against sub floor contamination but is designed to also offer extra comfort, thermal insulation and sound absorption.

Additional colours are available. Please see our website to view the whole range.



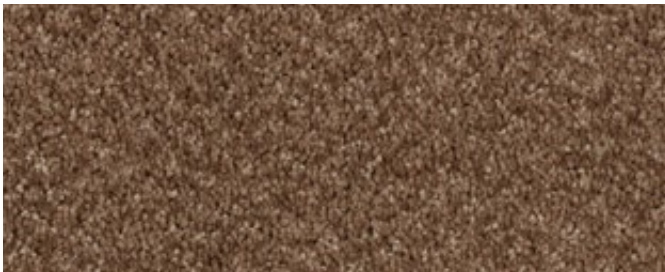
Dakota Beige LRV: 18.20



Dakota Grey LRV: 12.67



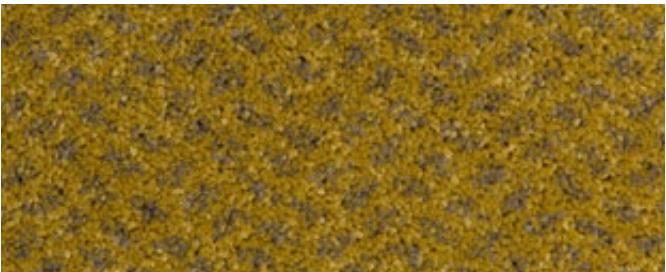
Lavender LRV: 17.72



Linen LRV: 14.36



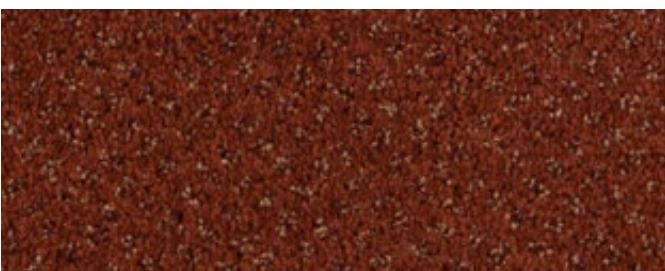
Hessian LRV: 12.77



Dijon LRV: 19.86



Cajun Spice LRV: 13.92



Fired Earth LRV: 8.06



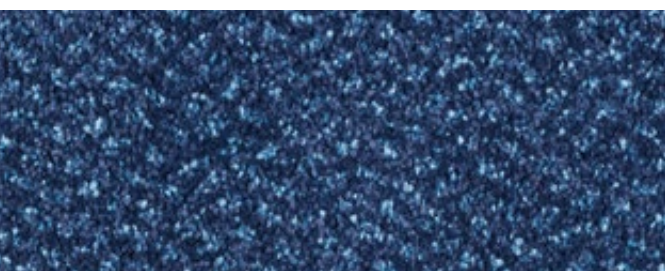
Sunset Paradise LRV: 6.40



Sparkling Lagoon LRV: 11.32



Deep Lagoon LRV: 9.57



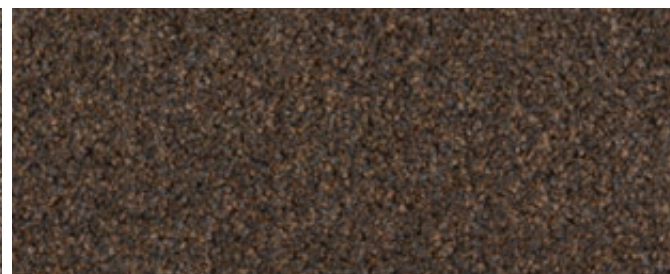
Night Sky LRV: 4.76



Mushroom LRV: 14.93



Autumn Dusk LRV: 10.25



Evening Hue LRV: 6.99



Sienna LRV: 17.48



Marsh Honey LRV: 11.76



Burnt Umber LRV: 5.95



Orchid Frost LRV: 9.71



Chanterelle LRV: 9.85



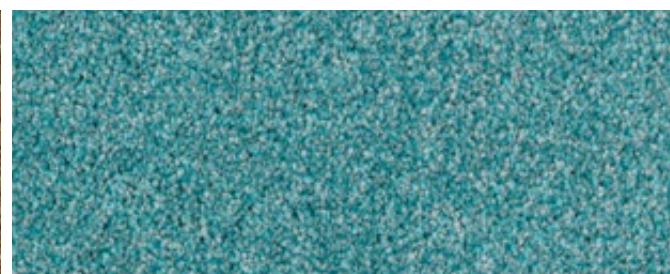
Emperor Royal LRV: 5.31



French Mustard LRV: 15.91



Moss Bell LRV: 13.15



Coral Ocean LRV: 15.58

EQUINOX

EQUINOX™ TONES

The subtle designs and vibrant colours of Equinox Tones assists in the creation of a modern interior design scheme. This carpet range offers outstanding performance, superior styling and a comprehensive warranty making it suitable for flooring applications within a number of sectors including healthcare and education.

Tones is a cut pile, solution dyed range available in a variety of contemporary colours. The tonal design combined with a pile weight of 1100 grams makes this carpet suitable for bedrooms and circulation areas in a variety of environments.

Equinox Tones not only has full BRE certification but also incorporates all the innovative features of the Equinox range including the Prism™ fibre, maedical i-Link and the Aqua Bac impervious membrane. In addition to this it's also been approved for use within dementia care settings.

Additional colours are available. Please see our website to view the whole range.



www.danfloor.co.uk

EQUINOX™ STRIPE

The versatile Equinox Stripe has a varied colour bank, consisting of colours from across Equinox and Equinox Tones. Stripe is available in 1250 grams allowing this range to be used within a variety of settings from hospitality to healthcare and locations from bedrooms to corridors.

The unique design provides you with an opportunity to create a co-ordinated and striking interior design scheme. Like the rest of the Equinox Collection Stripe includes the same innovative product features:

Prism™ Fibre – A carpet constructed with a fibre that has a unique cross section giving it incredible durability and soil and stain resistance

mædical i-Link – An antimicrobial coating on the carpet

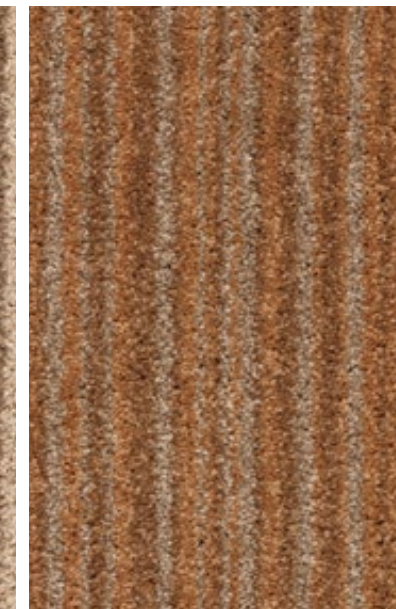
An Impervious membrane – Which stops liquid spills reaching the sub floor.

Equinox Stripe also comes with a comprehensive 10 year wear guarantee giving you that added piece of mind.

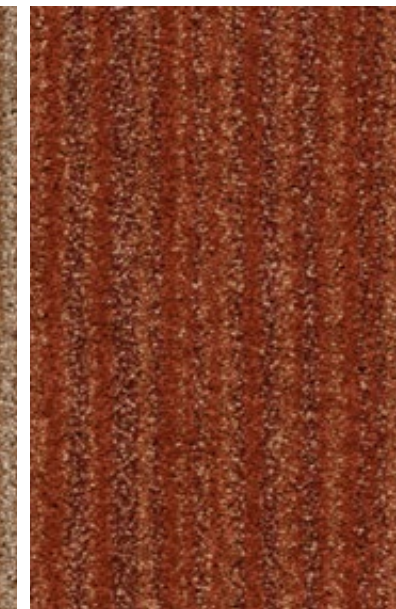
Additional colours are available. Please see our website to view the whole range.



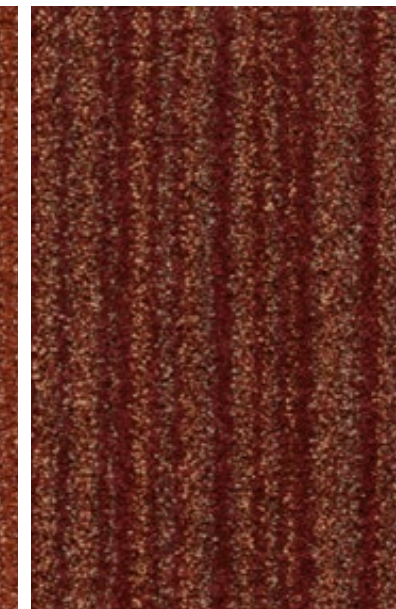
Arcadia LRV: 20.57



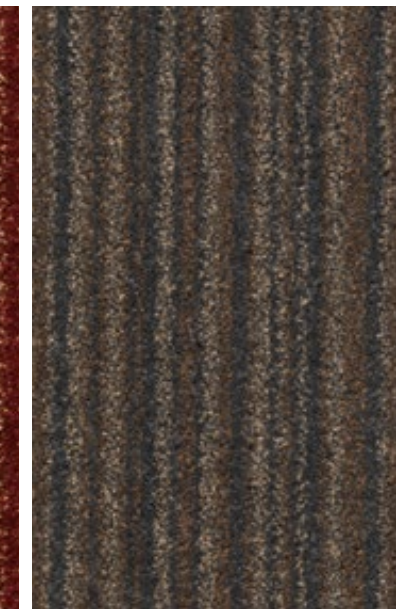
Galileo LRV: 14.57



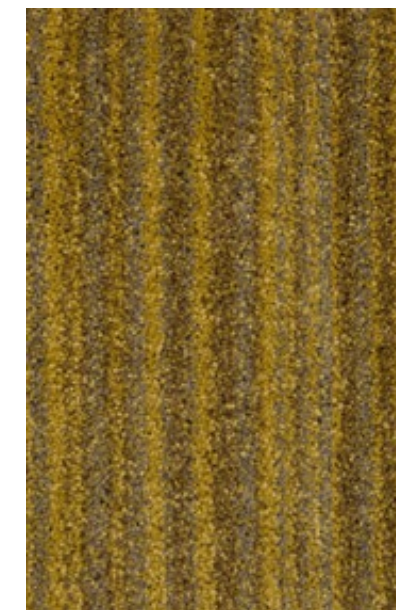
Calypso LRV: 9.36



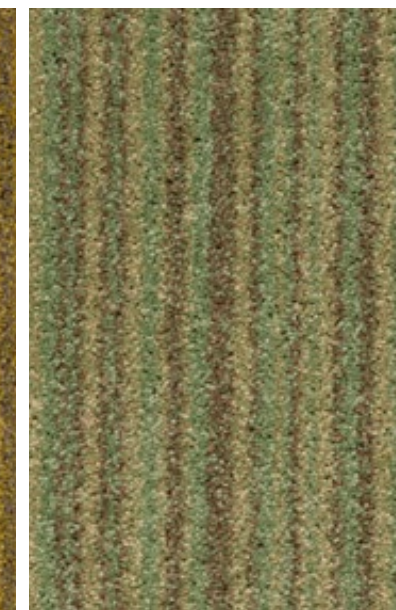
Horizon LRV: 5.94



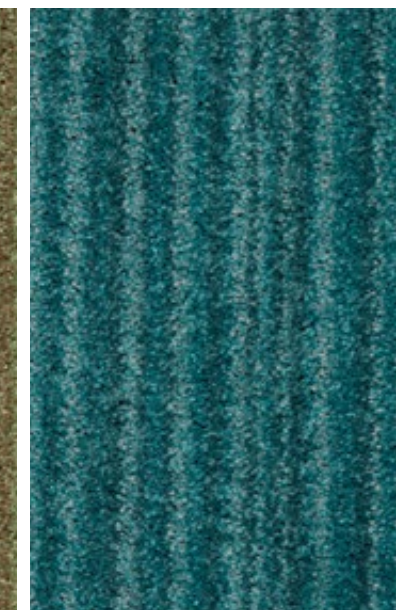
Odyssey LRV: 7.95



Adonia LRV: 16.96



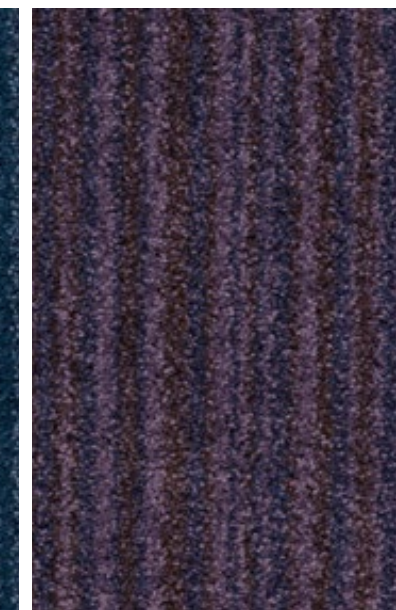
Legacy LRV: 18.69



Oceanic LRV: 10.30



Fair Seas LRV: 5.42



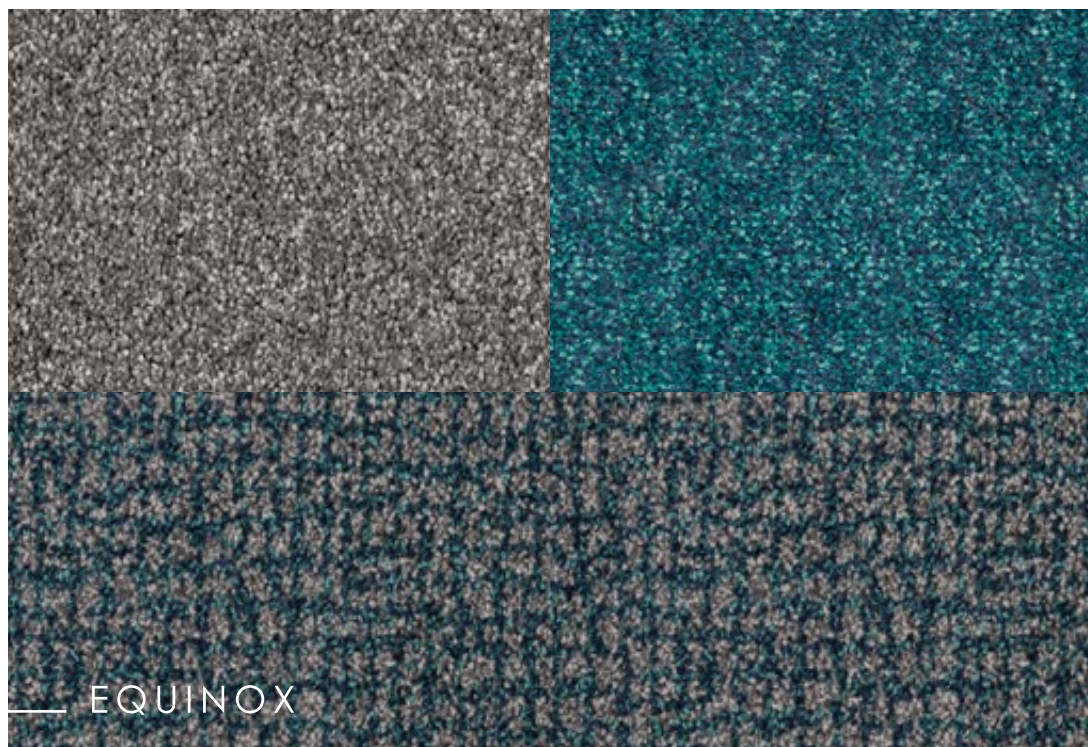
Renaissance LRV: 5.37

COLOUR COMBINATION

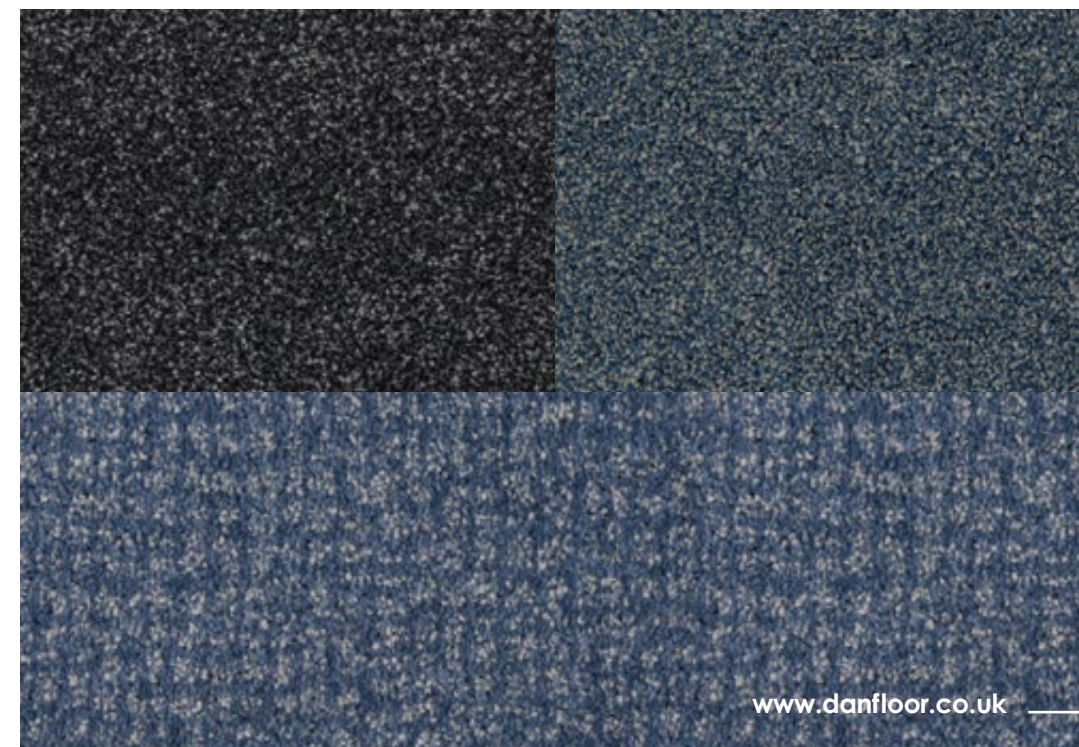
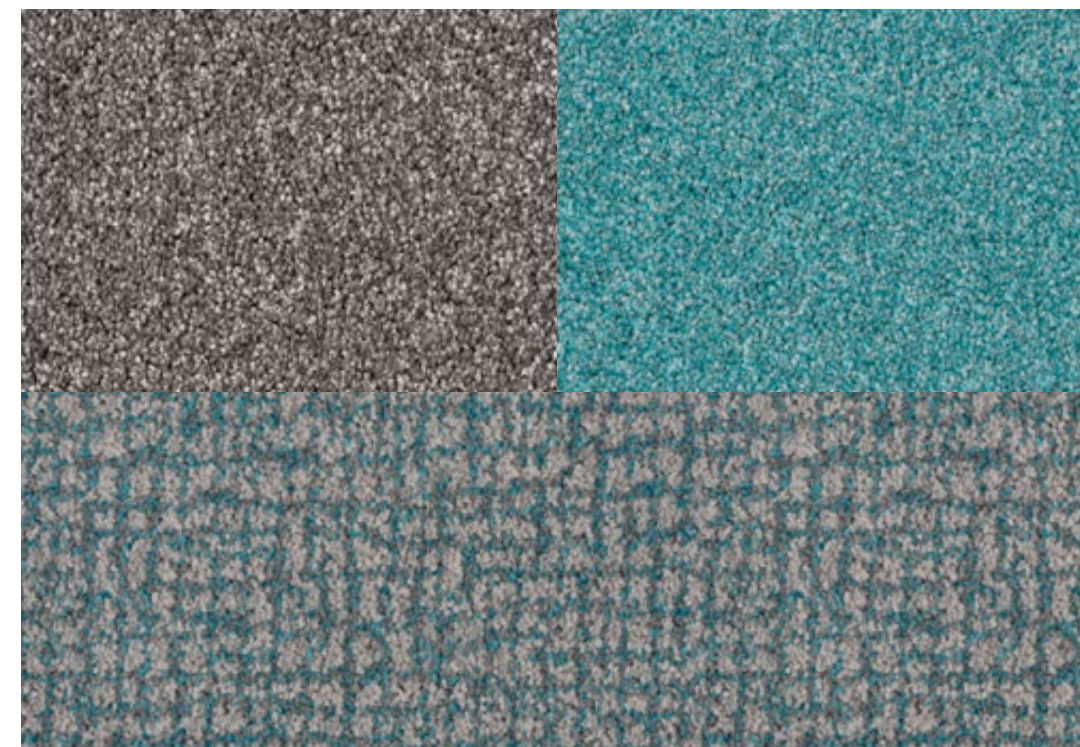
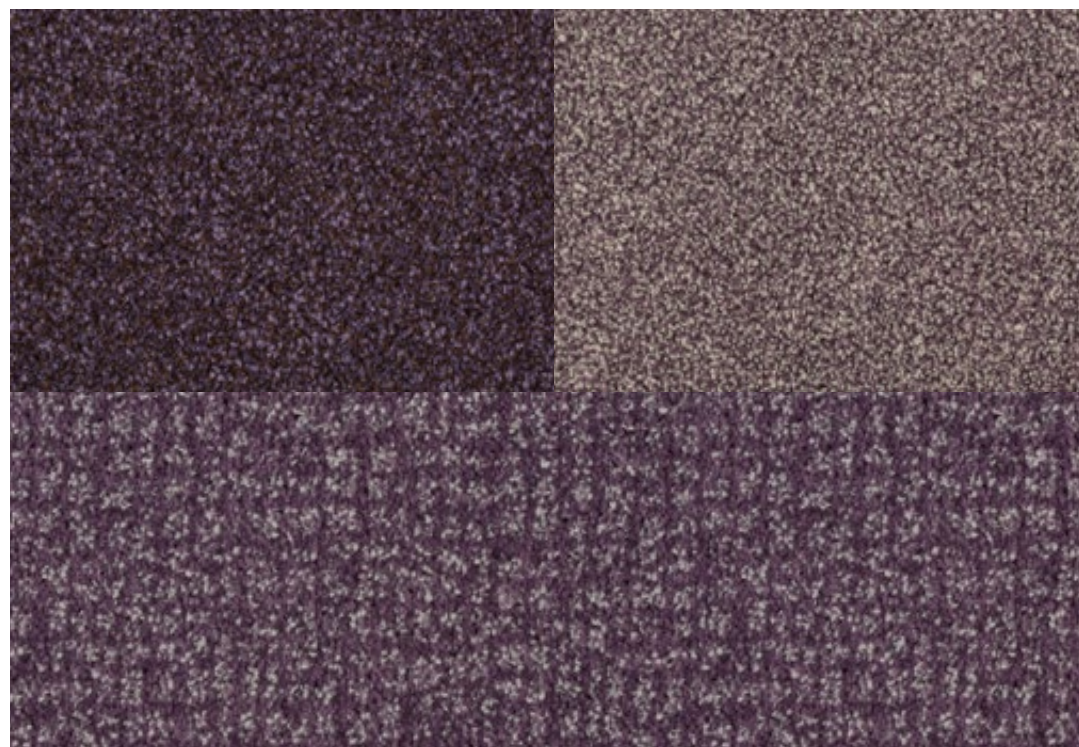
COMBINE RANGES FROM THE EQUINOX
COLLECTION TO CREATE STUNNING
INTERIOR DESIGN SCHEMES

Colour choice is an essential part of the design process which is why we ensure the ranges within our Equinox Collection can be used alongside each other. We regularly review colour scheme predications and create a bank of colours which are on trend and help to establish stylish and contemporary interior design schemes.

The following colour themes aim to provide some inspiration as to how Equinox Tones and Evolve can be specified together to complement and enhance your interior schemes.



— EQUINOX



www.danfloor.co.uk —

Our green guide ratings reflect how carefully we monitor the environmental impact of our business and our products.

45
MILLION
m²

**of flooring has been
certified by BREEAM
since 1998.**

(Best of BREEAM, 2013)

EQUINOX

SETTING THE STANDARDS FOR SUSTAINABLE DESIGN

danfloor recognises it has a responsibility to help protect the environment. We are committed to continually analysing every aspect of our business and its impact on the environment around us. The work we do and the certification we receive provides you with the peace of mind that our products, manufacturing processes and management have undergone rigorous testing and assessment to achieve the highest environmental credentials possible.

BREEAM[®]

BREEAM (BRE Environmental Assessment Method) is Europe's foremost environmental assessment method and rating system for buildings. It sets the standard for best practice in sustainable design and has become the ultimate measure used to describe a buildings environmental performance.

Our Equinox Collection comes with full BRE certification offering Green Guide Ratings ranging from A to A+. BRE ensures we meet and continue to meet appropriate standards through a combination of regular company audits and a schedule of ongoing tests, whilst providing independent verification for the work undertaken to enhance the environmental credentials of our products.

www.danfloor.co.uk

TECHNICAL SPECIFICATION	EQUINOX EVOLVE	PERFORMANCE TEST	EQUINOX EVOLVE
Design Pattern Identification	3611	Flammability / Hot Nut Test	Low Radius of Char - Pass
Method of Manufacture	Tufted Cut Pile	Burning Classification	Efl
Gauge	1/8" Gauge	Electrostatic Properties	1.5 kv @ 25% RH
Measures	Rolls, approx. 400cm wide	Thermal Resistance	1.51 Tog
Surface	Cut Pile Heat Set	Reduction of Transmitted Impact Noise	28dB
Colouration	Solution Dyed	Acoustics - Measurement of sound absorption in a reverberation room	Classification D
Pile Material	Prism™ Fibre	Colour Fastness	
Primary Backing	Woven Polypropylene	Light (1-8) Scale	Min 5
Total Weight	approx. 3400 g/m²	Rub Fastness	
Pile Weight	approx. 1300 g/m²	Water (1-5) Scale	Min 5
Total Height	approx. 10 mm	Shampoo (1-5) scale	Min 5
Pile Height	approx. 5.00 mm	Resistance to Abrasion (1-5) Scales	Min 5
Tuft Density	approx.166,500 Mt Sq	Luxury Rating	LC4
Backing	Aqua Bac Impervious		



TECHNICAL SPECIFICATION	EQUINOX	PERFORMANCE TEST	EQUINOX
Design Pattern Identification	3535	Wear Classification	Class 32
Method of Manufacture	Tufted Cut Pile	Flammability / Hot Nut Test	Low Radius of Char - Pass
Gauge	1/8" Gauge Graphic	Burning Classification	Efl
Measures	Rolls, approx. 400cm wide	Electrostatic Properties	1.5 kv @ 25% RH
Surface	Cut Pile Heat Set	Thermal Resistance	1.51 Tog
Colouration	Solution Dyed	Reduction of Transmitted Impact Noise	29dB
Pile Material	Prism™ Fibre	Acoustics - Measurement of sound absorption in a reverberation room	Classification D
Primary Backing	Woven Polypropylene	Colour Fastness	
Total Weight	approx. 3100 g/m²	Light (1-8) Scale	Min 5
Pile Weight	approx. 1050 g/m²	Rub Fastness	
Total Height	approx. 10 mm	Water (1-5) Scale	Min 5
Pile Height	approx. 5.00 mm	Shampoo (1-5) scale	Min 5
Tuft Density	approx.154,350 Mt Sq	Resistance to Abrasion (1-5) Scales	Min 5
Backing	Aqua Bac Impervious	Luxury Rating	LC3



EQUINOX™

TONES

TECHNICAL SPECIFICATION	EQUINOX TONES	PERFORMANCE TEST	EQUINOX TONES
Design Pattern Identification	3850	Wear Classification	Class 32
Method of Manufacture	Tufted Cut Pile	Flammability / Hot Nut Test	Low Radius of Char - Pass
Gauge	1/10" Gauge Graphic	Burning Classification	Efl
Measures	Rolls, approx. 400cm wide	Electrostatic Properties	1.5 kv @ 25% RH
Surface	Cut Pile Heat Set	Thermal Resistance	1.51 Tog
Colouration	Solution Dyed	Reduction of Transmitted Impact Noise	29dB
Pile Material	Prism™ Fibre	Acoustics - Measurement of sound absorption in a reverberation room	Classification D
Primary Backing	Woven Polypropylene	Colour Fastness	
Total Weight	approx. 3150 g/m²	Light (1-8) Scale	Min 5
Pile Weight	approx. 1100 g/m²	Rub Fastness	
Total Height	approx. 10 mm	Water (1-5) Scale	Min 5
Pile Height	approx. 5.00 mm	Shampoo (1-5) scale	Min 5
Tuft Density	approx.180,000 Mt Sq	Resistance to Abrasion (1-5) Scales	Min 5
Backing	Aqua Bac Impervious	Luxury Rating	LC3



EQUINOX™

STRIPE

TECHNICAL SPECIFICATION	EQUINOX STRIPE	PERFORMANCE TEST	EQUINOX STRIPE
Design Pattern Identification	3557	Wear Classification	Class 32
Method of Manufacture	Tufted Cut Pile	Flammability / Hot Nut Test	Low Radius of Char - Pass
Pattern Repeat	15cm	Burning Classification	Efl
Gauge	1/8" Gauge	Electrostatic Properties	1.5 kv @ 25% RH
Measures	Rolls, approx. 400cm wide	Thermal Resistance	1.51 Tog
Surface	Cut Pile Heat Set	Reduction of Transmitted Impact Noise	29dB
Colouration	Solution Dyed	Acoustics - Measurement of sound absorption in a reverberation room	Classification D
Pile Material	Prism™ Fibre	Colour Fastness	
Primary Backing	Woven Polypropylene	Light (1-8) Scale	Min 5
Total Weight	approx. 3300 g/m²	Rub Fastness	
Pile Weight	approx. 1250 g/m²	Water (1-5) Scale	Min 5
Total Height	approx. 10 mm	Shampoo (1-5) scale	Min 5
Pile Height	approx. 5.00 mm	Resistance to Abrasion (1-5) Scales	Min 5
Tuft Density	approx.185,000 Mt Sq	Luxury Rating	LC4
Backing	Aqua Bac Impervious		



Sign up online to receive our newsletters and keep up to date with all the latest information and developments regarding the Equinox Collection.

For further information about our ranges visit www.danfloor.co.uk or call our knowledgeable sales team on 0333 014 3132 where they will be more than happy to help with any enquiries.

To order samples visit our sample request page at www.danfloor.co.uk/samples or email sales@danfloor.co.uk

We look forward to hearing from you soon.

danfloor

An Ulster Group Company

danfloor UK Ltd

106 Longmead Road, Emerald Park,
Emersons Green, Bristol BS16 7FG,
United Kingdom

T: 0333 014 3132, F: 0333 014 3134

E: info@danfloor.co.uk

Danfloor Denmark

danfloor a/s, Østerbro 9, DK-6933 Kibæk
T: +45 9699 1900, F: +45 9699 1999

www.danfloor.co.uk